

Marine Valves

JAN, 2021

AFFCO FLOWCONTROL

Control your flow.



CONTENT

DIN

Single Plate Check Valve	5
Dual Plate Check Valve	8
Lift Check Valve	13
Swing Check Valve	22
Check Valve	27
Ball Check Valve	29
Wafer Lift Check Valve	32
Storm Flap Valve	35
Globe Valve	39
Gate Valve	49
Ball Valve	58
Strainer	65
Expansion Joint	67
Duplex Chain Oil Strainer	69
Foot Valve	70
Pressure Reducing Valve	72
Air Vent Check Valve	73
Quick Closing Valves	74
Basket Strainer	78
Mud box	80
Plug Valve	84
Fire Hose Valve	86
Pressure Gauge Valve	88
Sight Glass	90
Blind Flange Valve	92
Needle Valve	94
Self Closing Valve	95
ACTUATION-GENERAL OVERVIEW	99

Company Information

Business Strategy

With 60 years of product and industry experience Affco Flow Control continue to push the boundaries of technology & innovation for our clients. Being a Global player in the valve world with teams of industry experts within each facility catering for the international markets. Our continued growth has opened up new market sector and opportunities and we can still deliver the level of services, quality of product, reassurances & value engineering that our clients have come to expect.

Sustainability

Having Industry experts within each of our global facilities enables Affco Flow Control to offer the correct solution for customers requirements, giving the reassurances of our expertise and knowledge building the trust with our clients which is required for a sustainable business.

Market Focus

Over the years Affco Flow Control have listened to our customers needs and requirements; through analyzing, Innovation and product development we have built long standing relationships through this level of support and trust. It is within our ethos to never lose sight of the clients requirements and to ensure we offer the best value engineered solution to their needs.

AFFCO General

AFFCO, having over 60 years of trading experience in international markets such as water, marine, offshore, oil & gas and power industries. building a good reputation as a re-nowned global manufacturer of butterfly valves and flow control systems.

With key features such as lower operating torque, long service life through innovative design AFFCO are certified by LRQA, ISO9001-2015, PED 2014/68/EU directive, obtained major Marine approvals from LR/BV/ABS/CCS/DNV&GL/RMRS/RINA and Wras/Kiwa for drinking water applications.



AFFCO Global

The AFFCO group of companies are strategically positioned globally with sales and distribution centers in the Netherlands, United Kingdom, China, Dubai and Singapore, and will soon expand into the USA and the rest of major cities and continents. Equipped with internationally expertised teams, AFFCO are getting rooted in and contributing to local communities.

SHANGHAI



ROTTERDAM



TELFORD, UK



SHARJAH



SINGAPORE



Single Plate Check Valve

DIN flanges, Stainless steel

Product Number: S253D



Refer standards

Design Standard	API 6D
Face to face	API 6D
Flange connection	EN 1092-1 (DIN 2501)

Features

- Very short face to face
- Low Pressure loss
- Low weight

Options

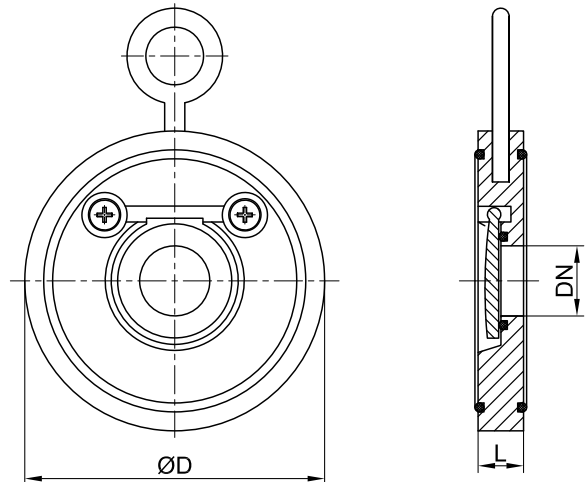
- Spring loaded
- Other dimensions on request

Pressure & Temperature Range

DN	Connection	Max.working pressure (bar)
		Up to 120°C
50-200	PN16	16
250-600	PN10	10

Materials

Component	Material	Code
Body	Stainless steel	GX2CrNiMo 19-11-2(1.4409)
Disc	Stainless steel	GX2CrNiMo 19-11-2(1.4409)
Seat	NBR/EPDM/VITON	-



Dimensions

DN	L	D	Weight(Kg)
50	19	108	1.5
65	19	128	2.1
80	19	142	2.6
100	19	162	3.4
125	19	192	4.8
150	19	218	6.1
200	29	273	14.7
250	29	328	21.3
300	38	378	36.8
350	44	438	57.2
400	51	489	82.7
450	60	539	118.2
500	64	594	153.5
600	70	695	163

Single Plate Check Valve

DIN flanges, Bronze

Product Number: S253D



Refer standards

Design Standard	API 6D
Face to face	API 6D
Flange connection	EN 1092-3 (DIN 2501)

Features

- Very short face to face
- Low Pressure loss
- Low weight

Options

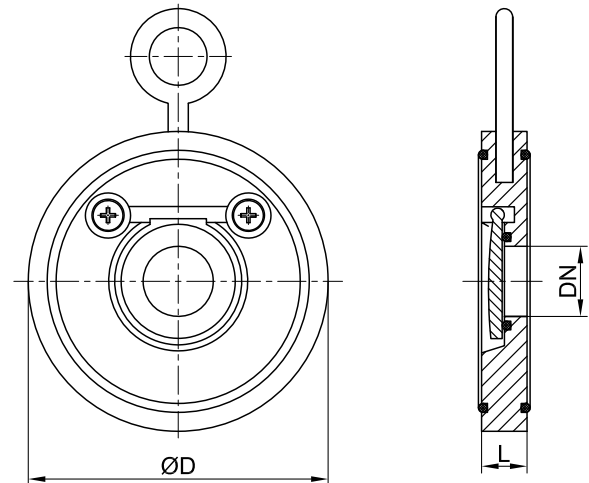
- Spring loaded
- Other dimensions on request

Pressure & Temperature Range

DN	Connection	Max.working pressure (bar)
		Up to 120°C
50-200	PN16	16
250-600	PN10	10

Materials

Component	Material	Code
Body	Bronze	CuSn5Zn5Pb5-C(CC491K)
Disc	Bronze	CuSn5Zn5Pb5-C(CC491K)
Seat	NBR/EPDM/VITON	-



Dimensions

DN	L	D	Weight(Kg)
50	19	108	1.7
65	19	128	2.3
80	19	142	2.9
100	19	162	3.7
125	19	192	5.3
150	19	218	6.7
200	29	273	16.2
250	29	328	23.4
300	38	378	40.5
350	44	438	63.1
400	51	489	91
450	60	539	130
500	64	594	169
600	70	695	181

Single Plate Check Valve

DIN flanges, Cast steel

Product Number: S253D



Refer standards

Design Standard	API 6D
Face to face	API 6D
Flange connection	EN 1092-1 (DIN 2501)

Features

- Very short face to face
- Low Pressure loss
- Low weight

Options

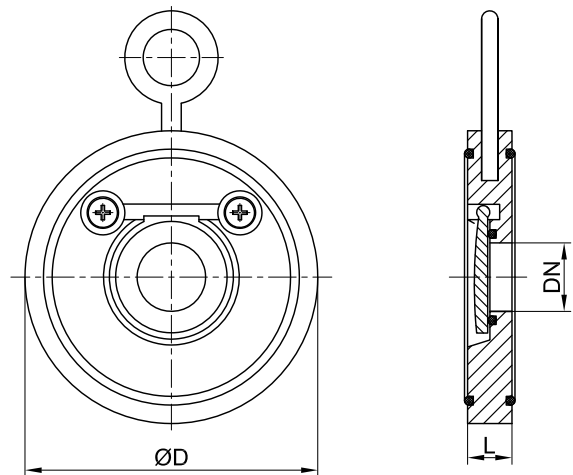
- Overpressure secured
- Spring loaded
- Other dimensions on request

Pressure & Temperature Range

DN	Connection	Max.working pressure (bar)
		Up to 120°C
50-200	PN16	16
250-600	PN10	10

Materials

Component	Material	Code
Body	Steel+galvanised	GP240GH(1.0619) +galvanised/ENP
Disc	Steel+galvanised	GP240GH(1.0619) +galvanised/ENP
Pin	Stainless steel	GX2CrNiMo 19-11-2 (1.4409)
Seat	NBR/EPDM/VITON	-



Dimensions

DN	L	D	Weight(Kg)
50	19	108	1.5
65	19	128	2.1
80	19	142	2.6
100	19	162	3.4
125	19	192	4.8
150	19	218	6.1
200	29	273	14.7
250	29	328	21.3
300	38	378	36.8
350	44	438	57.2
400	51	489	82.7
450	60	539	118.2
500	64	594	153.5
600	70	695	163

Dual Plate Check Valve

DIN flanges, Nodular Cast iron

Product Number: S252D



Refer standards

Design Standard	EN 16767
Face to face	EN558, Series 16
Flange connection	EN 1092-2 (DIN 2501)

Features

- Spring loaded discs
- Short face to face
- Low Pressure loss
- Precision casting disc

Options

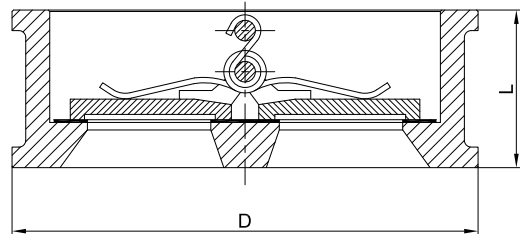
- Metal seat available on request

Pressure & Temperature Range

DN	Connection	Max.working pressure (bar)
		Up to 80°C
40-300	PN16	16
350-600	PN10	10

Materials

Component	Material	Code
Body	Nodular Cast Iron	EN-GJS-400-15(GGG40)
Disc	Albronz	CuAl10Fe5Ni5(AB2)
Stem	Stainless steel	X5CrNiMo17-12-2(1.4401)
Seat	NBR/EPDM/VITON	-



Dimensions

DN	L	D	Weight(Kg)
40	33	92	1.3
50	43	108	1.5
65	46	128	2.3
80	64	142	3.1
100	64	162	4.5
125	70	192	5.5
150	76	218	8.5
200	89	273	14.5
250	114	329	26.5
300	114	384	36.5
350	127	438	64.5
400	140	489	69.5
450	152	539	102
500	152	594	107
600	178	695	188

Dual Plate Check Valve

DIN flanges, Cast steel

Product Number: S252D



Refer standards

Design Standard	EN 16767
Face to face	EN558, Series 16
Flange connection	EN 1092-1 (DIN 2501)

Features

- Spring loaded discs
- Short face to face
- Low Pressure loss
- Precision casting disc

Options

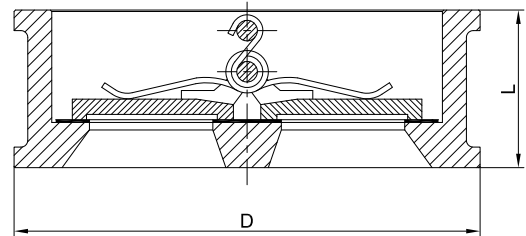
- Metal seat available on request

Pressure & Temperature Range

DN	Connection	Max.working pressure (bar)
		Up to 80°C
40-300	PN16	16
350-600	PN10	10

Materials

Component	Material	Code
Body	Cast steel	GP240GH(1.0619)
Disc	Stainless steel	GX5CrNiMo19-11-2 (1.4408)
Stem	Stainless steel	X5CrNiMo17-12-2(1.4401)
Seat	NBR/EPDM/VITON	-



Dimensions

DN	L	D	Weight(Kg)
40	33	92	1.3
50	43	108	1.5
65	46	128	2.3
80	64	142	3.1
100	64	162	4.5
125	70	192	5.5
150	76	218	8.5
200	89	273	14.5
250	114	329	26.5
300	114	384	36.5
350	127	438	64.5
400	140	489	69.5
450	152	539	102
500	152	594	107
600	178	695	188

Dual Plate Check Valve

DIN flanges, Stainless Steel

Product Number: S252D



Refer standards

Design Standard	EN 16767
Face to face	EN558, Series 16
Flange connection	EN 1092-1 (DIN 2501)

Features

- Spring loaded discs
- Short face to face
- Low Pressure loss
- Precision casting disc

Options

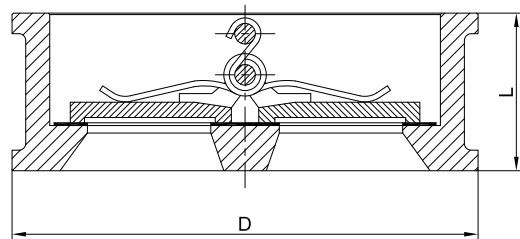
- Metal seat available on request

Pressure & Temperature Range

DN	Connection	Max.working pressure (bar)
		Up to 80°C
40-300	PN16	16
350-600	PN10	10

Materials

Component	Material	Code
Body	Stainless steel	GX5CrNiMo19-11-2 (1.4408)
Disc	Stainless steel	GX5CrNiMo19-11-2 (1.4408)
Stem	Stainless steel	X5CrNiMo17-12-2(1.4401)
Seat	NBR/EPDM/VITON	-



Dimensions

DN	L	D	Weight(Kg)
40	33	92	1.3
50	43	108	1.5
65	46	128	2.3
80	64	142	3.1
100	64	162	4.5
125	70	192	5.5
150	76	218	8.5
200	89	273	14.5
250	114	329	26.5
300	114	384	36.5
350	127	438	64.5
400	140	489	69.5
450	152	539	102
500	152	594	107
600	178	695	188



Refer standards

Design Standard	EN 16767
Face to face	EN558, Series 16
Flange connection	EN 1092-3 (DIN 2501)

Features

- Spring loaded discs
- Short face to face
- Low Pressure loss
- Precision casting disc

Options

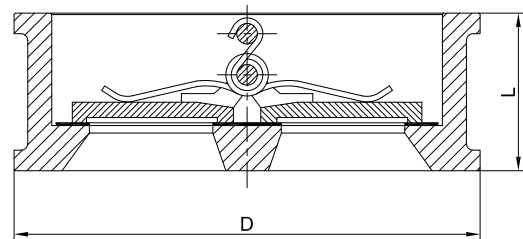
- Metal seat available on request

Pressure & Temperature Range

DN	Connection	Max.working pressure (bar)
		Up to 80°C
40-300	PN16	16
350-600	PN10	10

Materials

Component	Material	Code
Body	Albronze	CuAl10Fe5Ni5(AB2)
Disc	Albronze	CuAl10Fe5Ni5(AB2)
Stem	Stainless steel	X12CrNiMoN225(1.4462)
Seat	NBR/EPDM/VITON	-



Dimensions

DN	L	D	Weight(Kg)
40	33	92	1.5
50	43	108	1.8
65	46	128	2.6
80	64	142	3.6
100	64	162	5.7
125	70	192	6.9
150	76	218	10
200	89	273	17
250	114	329	30.3
300	114	384	41.8
350	127	438	72.6
400	140	489	77.6
450	152	539	114.5
500	152	594	120.5
600	178	695	211

Dual Plate Check Valve_Rubber Lined

DIN flanges, Nodular Cast iron+EPDM

Product Number: S254D



Refer standards

Design Standard	EN 16767
Face to face	EN558, Series 16
Flange connection	EN 1092-2 (DIN 2501)

Features

- Spring loaded discs
- Short face to face
- Low Pressure loss
- Precision casting disc

Options

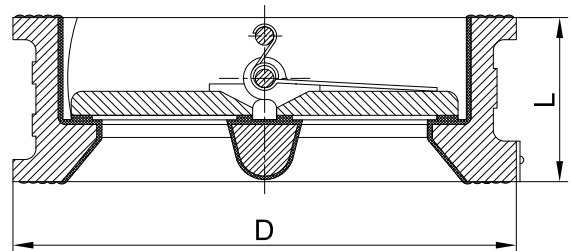
- Various seats available
- Various body and Disc materials available

Pressure & Temperature Range

DN	Connection	Max.working pressure (bar)
		Up to 120°C
40-300	PN16	16
350-600	PN10	10

Materials

Component	Material	Code
Body	Nodular Cast Iron+NBR	EN-GJL-400-15 (GGG40)+NBR
Disc	Albronce	CuAl10Fe5Ni5(AB2)
Stem	Stainless steel	X12CrNiMoN225(1.4462)
Seat	NBR/EPDM/VITON	-



Dimensions

DN	L	D	Weight(Kg)
40	33	92	1.3
50	43	108	1.5
65	46	128	2.3
80	64	142	3.1
100	64	162	4.5
125	70	192	5.5
150	76	218	8.5
200	89	273	14.5
250	114	329	26.5
300	114	384	37
350	127	438	65
400	140	489	70
450	152	539	103
500	152	594	108
600	178	695	190



Refer standards

Design Standard	DIN 86251 (DIN 3356)
Face to face	EN558, Series 1 (DIN 3202 F1)
Flange connection	EN 1092-2 (DIN 2501)

Features

- Bolted bonnet
- Horizontal installation

Options

- Spring loaded
- Other materials and dimensions on request

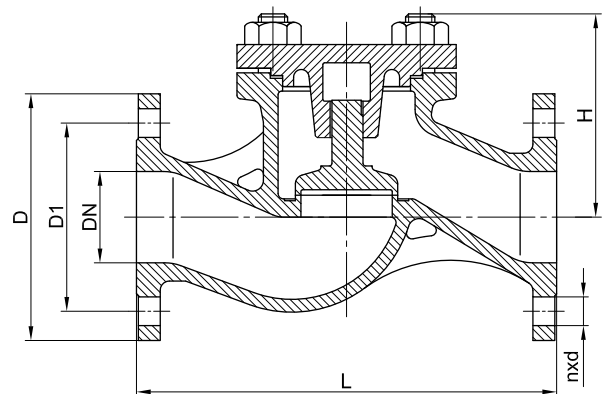
Pressure & Temperature Range

DN	Connection	Max.working pressure (bar)
15-150	PN16	16
200-300	PN10	10

Up to 120°C

Materials

Component	Material	Code
Body	Cast iron	EN-GJL-250 (GG25)
Bonnet	Cast iron	EN-GJL-250 (GG25)
Disc	Bronze	CuZn40Pb2(CW617N)
Seat	Bronze	CuSn5Zn5Pb5-C(CC491K)



Dimensions

DN	L	D	D1	H	nxd	Weight(Kg)
15	130	95	65	56	4x14	2.2
20	150	105	75	56	4x14	2.8
25	160	115	85	68	4x14	4.0
32	180	140	100	78	4x19	5.8
40	200	150	110	90	4x19	7.8
50	230	165	125	98	4x19	10
65	290	185	145	105	4x19	15.9
80	310	200	160	125	8x19	21.2
100	350	220	180	163	8x19	30.8
125	400	250	210	175	8x19	43.5
150	480	285	240	200	8x23	70
200	600	340	295	250	8x23	117.7
250	730	395	350	335	12x23	207.8
300	850	445	400	380	12x23	320

Lift Check Valve

DIN flanges, Nodular Cast iron, Straight type

Product Number: S240D



Refer standards

Design Standard	DIN 86251 (DIN 3356)
Face to face	EN558, Series 1 (DIN 3202 F1)
Flange connection	EN 1092-2 (DIN 2501)

Features

- Bolted bonnet
- Horizontal installation

Options

- Spring loaded
- Other materials and dimensions on request

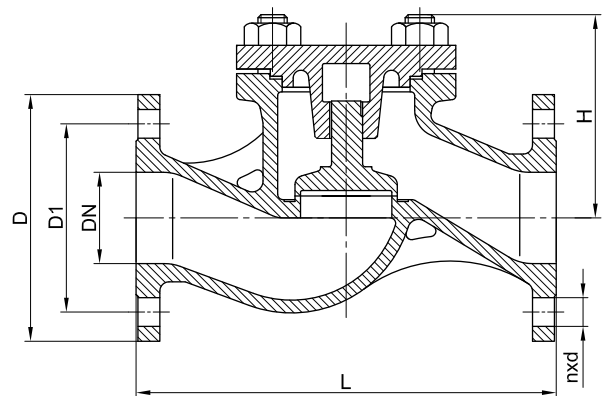
Pressure & Temperature Range

DN	Connection	Max.working pressure (bar)
15-150	PN16	16
200-300	PN10	10

Up to 120°C

Materials

Component	Material	Code
Body	Nodular Cast iron	EN-GJS-400-15 (GGG40)
Bonnet	Nodular Cast iron	EN-GJS-400-15 (GGG40)
Disc	Special brass	CuZn40Pb2(CW617N)
Seat	Bronze	CuSn5Zn5Pb5-C(CC491K)



Dimensions

DN	L	D	D1	H	nxd	Weight(Kg)
15	130	95	65	56	4x14	2.2
20	150	105	75	56	4x14	2.8
25	160	115	85	68	4x14	4.0
32	180	140	100	78	4x19	5.8
40	200	150	110	90	4x19	7.8
50	230	165	125	98	4x19	10
65	290	185	145	105	4x19	15.9
80	310	200	160	125	8x19	21.2
100	350	220	180	163	8x19	30.8
125	400	250	210	175	8x19	43.5
150	480	285	240	200	8x23	70
200	600	340	295	250	8x23	117.7
250	730	395	350	335	12x23	207.8
300	850	445	400	380	12x23	320



Refer standards

Design Standard	DIN 86251 (DIN 3356)
Face to face	EN558, Series 1 (DIN 3202 F1)
Flange connection	EN 1092-1 (DIN 2501)

Features

- Bolted bonnet
- Horizontal installation

Options

- Spring loaded
- Other materials and dimensions on request

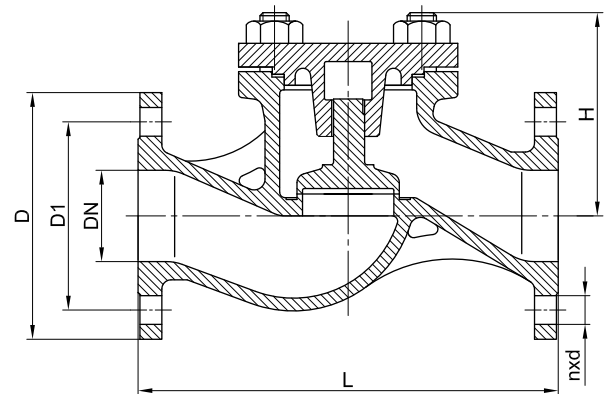
Pressure & Temperature Range

DN	Connection	Max.working pressure (bar)
15-150	PN16	16
200-300	PN10	10

Up to 120°C

Materials

Component	Material	Code
Body	Cast steel	GP240GH (1.0619)
Bonnet	Cast steel	GP240GH (1.0619)
Disc	Stainless steel	X20Cr13(1.4021)
Seat	Stainless steel	X20Cr13(1.4021)



Dimensions

DN	L	D	D1	H	nxd	Weight(Kg)
15	130	95	65	56	4x14	3.2
20	150	105	75	56	4x14	3.5
25	160	115	85	68	4x14	5.5
32	180	140	100	78	4x18	7.5
40	200	150	110	90	4x18	9.5
50	230	165	125	98	4x18	12.1
65	290	185	145	105	8x18	17.2
80	310	200	160	125	8x18	23.5
100	350	235	190	163	8x22	32.8
125	400	270	220	175	8x26	45.5
150	480	300	250	200	8x26	73.8
200	600	360	310	250	12x26	123.5
250	730	425	370	335	12x30	210.5
300	850	485	430	380	16x30	345

Lift Check Valve

DIN flanges, Stainless steel, Straight type

Product Number: S240D



Refer standards

Design Standard	DIN 86251 (DIN 3356)
Face to face	EN558, Series 1 (DIN 3202 F1)
Flange connection	EN 1092-1 (DIN 2501)

Features

- Bolted bonnet
- Horizontal installation

Options

- Spring loaded
- Other materials and dimensions on request

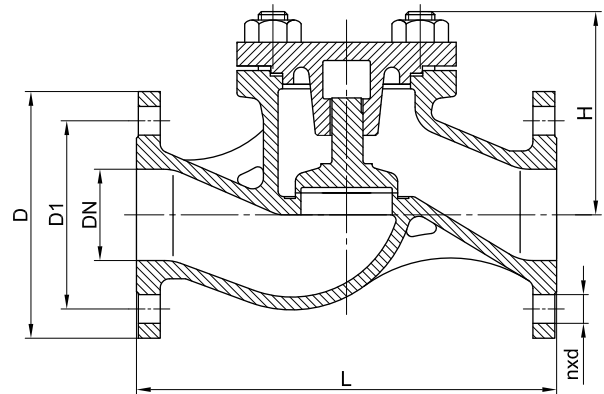
Pressure & Temperature Range

DN	Connection	Max.working pressure (bar)
15-150	PN16	16
200-300	PN10	10

Up to 120°C

Materials

Component	Material	Code
Body	Stainless steel	GX5CrNiMo19-11-2(1.4408)
Bonnet	Stainless steel	GX5CrNiMo19-11-2(1.4408)
Disc	Stainless steel	GX5CrNiMo19-11-2(1.4408)
Seat	Stainless steel	GX5CrNiMo19-11-2(1.4408)



Dimensions

DN	L	D	D1	H	nxd	Weight(Kg)
15	130	95	65	56	4x14	3.2
20	150	105	75	56	4x14	3.5
25	160	115	85	68	4x14	5.2
32	180	140	100	78	4x18	6.5
40	200	150	110	90	4x18	8.4
50	230	165	125	98	4x18	11.5
65	290	185	145	105	4x18	17.7
80	310	200	160	125	8x18	22.3
100	350	220	180	163	8x18	31.5
125	400	250	210	175	8x18	45.2
150	480	285	240	200	8x22	71.5
200	600	340	295	250	8x22	119.5
250	730	395	350	335	12x22	208..5
300	850	445	400	380	12x22	321.2



Refer standards

Design Standard	DIN 86251 (DIN 3356)
Face to face	EN558, Series 1 (DIN 3202 F1)
Flange connection	EN 1092-3 (DIN 2501)

Features

- Bolted bonnet
- Horizontal installation

Options

- Spring loaded
- Other materials and dimensions on request

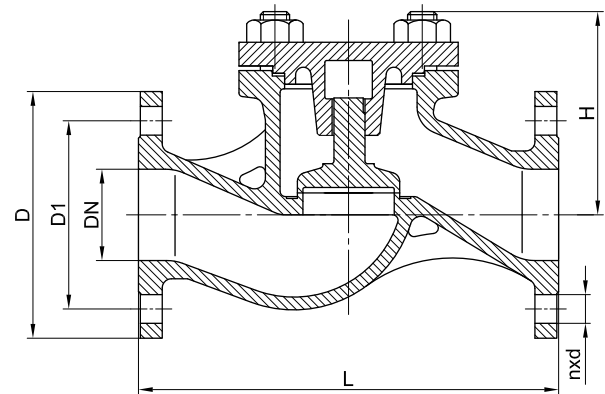
Pressure & Temperature Range

DN	Connection	Max.working pressure (bar)
15-150	PN16	16
200-300	PN10	10

Up to 120°C

Materials

Component	Material	Code
Body	Bronze	CuSn5Zn5Pb5-C(CC491K)
Bonnet	Bronze	CuSn5Zn5Pb5-C(CC491K)
Disc	Bronze	CuSn5Zn5Pb5-C(CC491K)
Seat	Bronze	CuSn5Zn5Pb5-C(CC491K)



Dimensions

DN	L	D	D1	H	nxd	Weight(Kg)
15	130	95	65	56	4x14	3.2
20	150	105	75	56	4x14	3.5
25	160	115	85	68	4x14	5.2
32	180	140	100	78	4x18	6.5
40	200	150	110	90	4x18	8.4
50	230	165	125	98	4x18	11.5
65	290	185	145	105	4x18	17.7
80	310	200	160	125	8x18	22.3
100	350	220	180	163	8x18	31.5
125	400	250	210	175	8x18	45.2
150	480	285	240	200	8x22	71.5
200	600	340	295	250	8x22	119.5
250	730	395	350	335	12x22	208..5
300	850	445	400	380	12x22	321.2



Refer standards

Design Standard	DIN 86251 (DIN 3356)
Face to face	EN558, Series 8 (DIN 3202 F32)
Flange connection	EN 1092-2 (DIN 2501)

Features

- Bolted bonnet
- Vertical installation

Options

- Spring loaded
- Other materials and dimensions on request

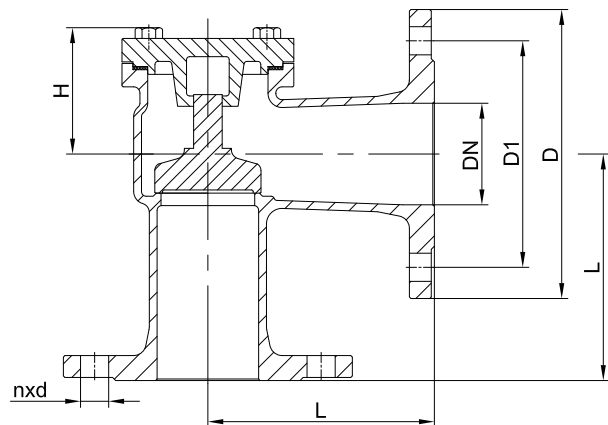
Pressure & Temperature Range

DN	Connection	Max.working pressure (bar)
15-150	PN16	16
200-300	PN10	10

Up to 120°C

Materials

Component	Material	Code
Body	Cast iron	EN-GJL-250 (GG25)
Bonnet	Cast iron	EN-GJL-250 (GG25)
Disc	Bronze	CuSn5Zn5Pb5-C(CC491K)
Seat	Bronze	CuSn5Zn5Pb5-C(CC491K)



Dimensions

DN	L	D	D1	H	nxd	Weight(Kg)
15	90	95	65	50	4x14	2.3
20	95	105	75	50	4x14	3.0
25	100	115	85	58	4x14	4.2
32	105	140	100	65	4x19	5.8
40	115	150	110	75	4x19	7.4
50	125	165	125	75	4x19	9.8
65	145	185	145	80	4x19	12.7
80	155	200	160	80	8x19	18.2
100	175	220	180	115	8x19	26.5
125	200	250	210	120	8x19	38.2
150	225	285	240	125	8x23	58.3
200	275	340	295	160	8x23	102.8
250	325	395	350	200	12x23	208.5
300	375	445	400	240	12x23	322



Refer standards

Design Standard	DIN 86251 (DIN 3356)
Face to face	EN558, Series 8 (DIN 3202 F32)
Flange connection	EN 1092-1 (DIN 2501)

Features

- Bolted bonnet
- Vertical installation

Options

- Spring loaded
- Other materials and dimensions on request

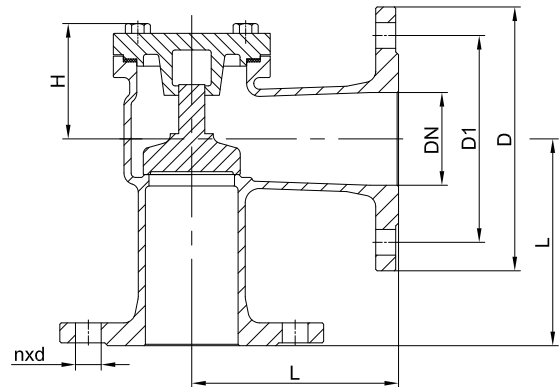
Pressure & Temperature Range

DN	Connection	Max.working pressure (bar)
15-150	PN16	16
200-300	PN10	10

Up to 120°C

Materials

Component	Material	Code
Body	Cast steel	GP240GH(GS-C25)
Bonnet	Cast steel	GP240GH(GS-C25)
Disc	Stainless Steel	X20Cr13(1.4021)
Seat	Stainless Steel	X20Cr13(1.4021)



Dimensions

DN	L	D	D1	H	nxd	Weight(Kg)
15	90	95	65	50	4x14	2.3
20	95	105	75	50	4x14	3.0
25	100	115	85	58	4x14	4.2
32	105	140	100	65	4x18	5.8
40	115	150	110	75	4x18	7.4
50	125	165	125	75	4x18	9.8
65	145	185	145	80	8x18	12.7
80	155	200	160	80	8x18	23.5
100	175	235	190	115	8x22	32.8
125	200	270	220	120	8x26	45.5
150	225	300	250	125	8x26	73.8
200	275	360	310	160	12x26	123.5
250	325	425	370	200	12x30	210.5
300	375	485	430	240	16x30	345



Refer standards

Design Standard	DIN 86251 (DIN 3356)
Face to face	EN558, Series 8 (DIN 3202 F32)
Flange connection	EN 1092-1 (DIN 2501)

Features

- Bolted bonnet
- Vertical installation

Options

- Spring loaded
- Other materials and dimensions on request

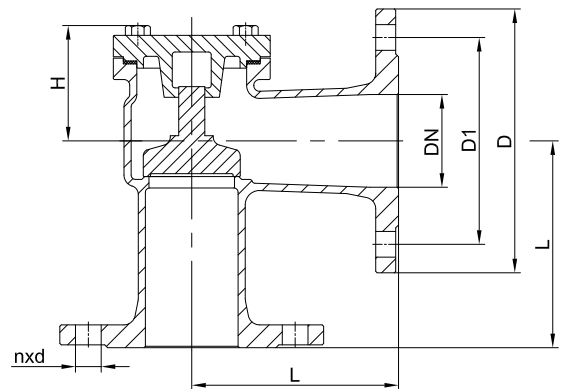
Pressure & Temperature Range

DN	Connection	Max.working pressure (bar)
15-150	PN16	16
200-300	PN10	10

Up to 120°C

Materials

Component	Material	Code
Body	Stainless steel	GX5CrNiMo19-11-2(1.4408)
Bonnet	Stainless steel	GX5CrNiMo19-11-2(1.4408)
Disc	Stainless steel	GX5CrNiMo19-11-2(1.4408)
Seat	Stainless steel	GX5CrNiMo19-11-2(1.4408)



Dimensions

DN	L	D	D1	H	nxd	Weight(Kg)
15	90	95	65	50	4x14	2.3
20	95	105	75	50	4x14	3.0
25	100	115	85	58	4x14	4.2
32	105	140	100	65	4x18	5.8
40	115	150	110	75	4x18	7.4
50	125	165	125	75	4x18	9.8
65	145	185	145	80	8x18	12.7
80	155	200	160	80	8x18	23.5
100	175	235	190	115	8x22	32.8
125	200	270	220	120	8x26	45.5
150	225	300	250	125	8x26	73.8
200	275	360	310	160	12x26	123.5
250	325	425	370	200	12x30	210.5
300	375	485	430	240	16x30	345



Refer standards

Design Standard	DIN 86251 (DIN 3356)
Face to face	EN558, Series 8 (DIN 3202 F32)
Flange connection	EN 1092-3 (DIN 2501)

Features

- Bolted bonnet
- Vertical installation

Options

- Spring loaded
- Other materials and dimensions on request

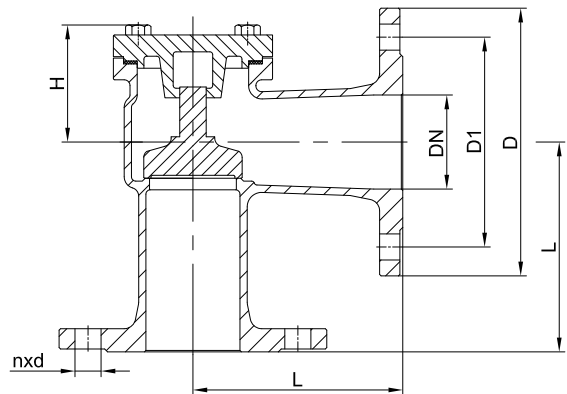
Pressure & Temperature Range

DN	Connection	Max.working pressure (bar)
15-150	PN16	16
200-300	PN10	10

Up to 120°C

Materials

Component	Material	Code
Body	Bronze	CuSn5Zn5Pb5-C(CC491K)
Bonnet	Bronze	CuSn5Zn5Pb5-C(CC491K)
Disc	Bronze	CuSn5Zn5Pb5-C(CC491K)
Seat	Bronze	CuSn5Zn5Pb5-C(CC491K)



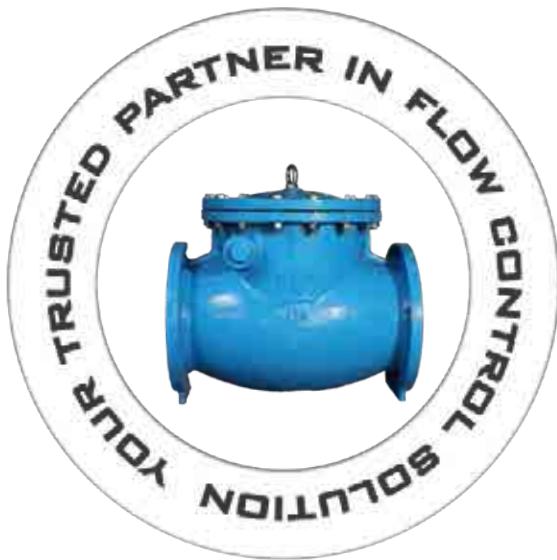
Dimensions

DN	L	D	D1	H	nxd	Weight(Kg)
15	90	95	65	50	4x14	2.2
20	95	105	75	50	4x14	2.9
25	100	115	85	58	4x14	4.0
32	105	140	100	65	4x18	5.5
40	115	150	110	75	4x18	7.0
50	125	165	125	75	4x18	9.2
65	145	185	145	80	8x18	11.5
80	155	200	160	80	8x18	17.5
100	175	220	180	115	8x18	25.8
125	200	250	210	120	8x18	38.2
150	225	285	240	125	8x22	59
200	275	340	295	160	8x22	101
250	325	395	350	200	12x22	208
300	375	445	400	240	12x22	310

Swing Check Valve

DIN flanges, Cast iron

Product Number: S243D



Refer standards

Design Standard	DIN 16767
Face to face	EN558, Series 14(DIN 3202 F4)
Flange connection	EN 1092-2 (DIN 2501)

Features

- Bolted bonnet
- Swing type

Options

- Other dimensions on request

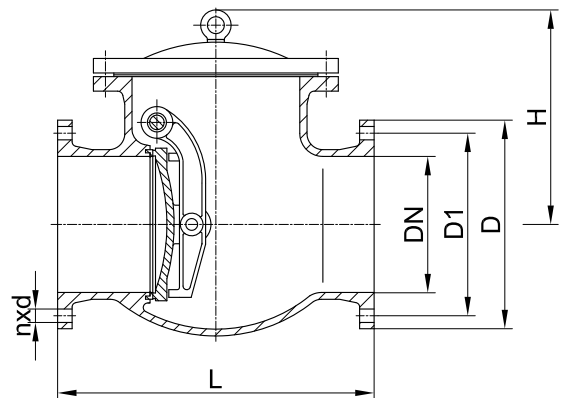
Pressure & Temperature Range

DN	Connection	Max.working pressure (bar)
40-150	PN16	16
200-400	PN10	10

Up to 120°C

Materials

Component	Material	Code
Body	Cast iron	EN-GJL-250 (GG25)
Disc	Nodular cast iron	EN-GJL-400-15 (GGG40)+CC491K
Pin	Special brass	CuZn39Pb3(CW614N)
Seat	Bronze	CuSn5Zn5Pb5-C(CC491K)



Dimensions

DN	L	D	D1	H	nxd	Weight(Kg)
40	140	150	110	140	4x19	15
50	150	165	125	150	4x19	18
65	170	185	145	180	4x19	25
80	180	200	160	200	8x19	29
100	190	220	180	300	8x19	45
125	200	250	210	300	8x19	75
150	210	285	240	300	8x23	105
200	230	340	295	300	8x23	176
250	250	395	350	380	12x23	286
300	270	445	400	405	12x23	290
350	290	505	460	430	16x23	295
400	310	565	515	472	16x28	526



Refer standards

Design Standard	DIN 16767
Face to face	EN558, Series 14(DIN 3202 F4)
Flange connection	EN 1092-2 (DIN 2501)

Features

- Bolted bonnet
- Full bore
- Swing type

Options

- Other dimensions on request

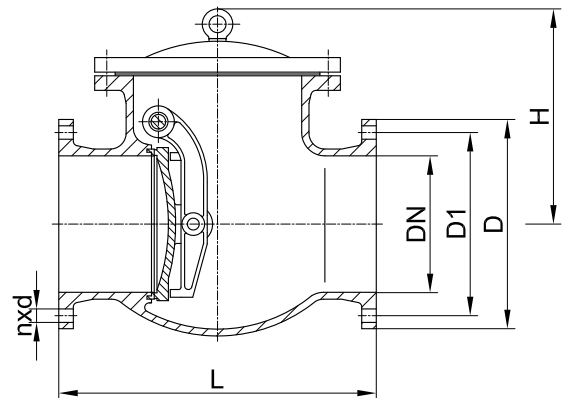
Pressure & Temperature Range

DN	Connection	Max.working pressure (bar)
40-150	PN16	16
200-400	PN10	10

Up to 120°C

Materials

Component	Material	Code
Body	Nodular Cast iron	EN-GJL-400-15 (GGG40)
Disc	Nodular cast iron	EN-GJL-400-15 (GGG40)+CC491K
Pin	Special brass	CuZn39Pb3(CW614N)
Seat	Bronze	CuSn5Zn5Pb5-C(CC491K)



Dimensions

DN	L	D	D1	H	nxd	Weight(Kg)
40	140	150	110	140	4x19	15
50	150	165	125	150	4x19	18
65	170	185	145	180	4x19	25
80	180	200	160	200	8x19	29
100	190	220	180	300	8x19	45
125	200	250	210	300	8x19	75
150	210	285	240	300	8x23	105
200	230	340	295	300	8x23	176
250	250	395	350	380	12x23	286
300	270	445	400	405	12x23	290
350	290	505	460	430	16x23	295
400	310	565	515	472	16x28	526

Swing Check Valve

DIN flanges, Cast steel

Product Number: S243D



Refer standards

Design Standard	DIN 16767
Face to face	EN558, Series 14(DIN 3202 F4)
Flange connection	EN 1092-1 (DIN 2501)

Features

- Bolted bonnet
- Full bore
- Swing type

Options

- Other dimensions on request

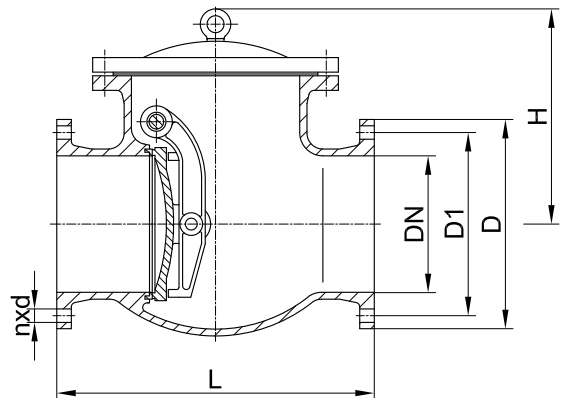
Pressure & Temperature Range

DN	Connection	Max.working pressure (bar)
40-150	PN16	16
200-400	PN10	10

Up to 120°C

Materials

Component	Material	Code
Body	Cast steel	GP240GH(1.0619)
Disc	Bronze	CuSn5Zn5Pb5-C(CC491K)
Pin	Stainless steel	X20Cr13(1.4021)
Seat	Deposited stellite	-



Dimensions

DN	L	D	D1	H	nxd	Weight(Kg)
40	140	150	110	140	4x18	15
50	150	165	125	150	4x18	18
65	170	185	145	180	8x18	25
80	180	200	160	200	8x18	29
100	190	220	180	300	8x18	45
125	200	250	210	300	8x18	75
150	210	285	240	300	8x22	105
200	230	340	295	300	8x22	176
250	250	395	350	380	12x22	286
300	270	445	400	405	12x22	290
350	290	505	460	430	16x22	295
400	310	565	515	472	16x26	526

Swing Check Valve

DIN flanges, Stainless steel

Product Number: S243D



Refer standards

Design Standard	DIN 16767
Face to face	EN558, Series 14(DIN 3202 F4)
Flange connection	EN 1092-1 (DIN 2501)

Features

- Bolted bonnet
- Full bore
- Swing type

Options

- Other dimensions on request

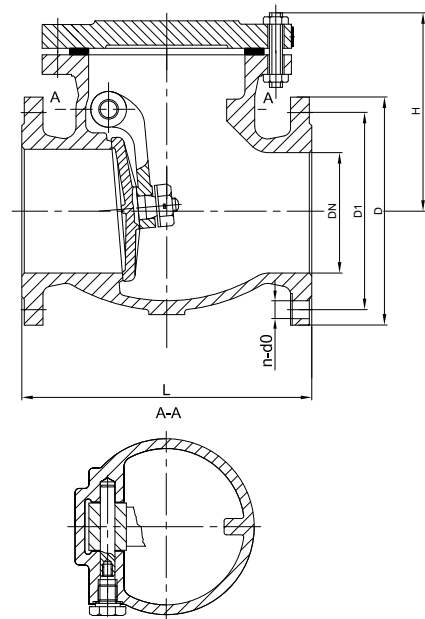
Pressure & Temperature Range

DN	Connection	Max.working pressure (bar)
40-150	PN16	16
200-400	PN10	10

Up to 120°C

Materials

Component	Material	Code
Body	Stainless steel	GX5CrNiMo19-11-2(1.4408)
Disc	Stainless steel	GX5CrNiMo19-11-2(1.4408)
Pin	Stainless steel	X5CrNiMo17-12-2(1.4401)
Seat	Stainless steel	X5CrNiMo17-12-2(1.4401)



Dimensions

DN	L	D	D1	H	nxd	Weight(Kg)
40	140	150	110	140	4x18	15
50	150	165	125	150	4x18	18
65	170	185	145	180	8x18	25
80	180	200	160	200	8x18	29
100	190	220	180	300	8x18	45
125	200	250	210	300	8x18	75
150	210	285	240	300	8x22	105
200	230	340	295	300	8x22	176
250	250	395	350	380	12x22	286
300	270	445	400	405	12x22	290
350	290	505	460	430	16x22	295
400	310	565	515	472	16x26	526



Refer standards

Design Standard	DIN 16767
Face to face	EN558, Series 14(DIN 3202 F4)
Flange connection	EN 1092-3 (DIN 2501)

Features

- Bolted bonnet
- Full bore
- Swing type

Options

- Other dimensions on request

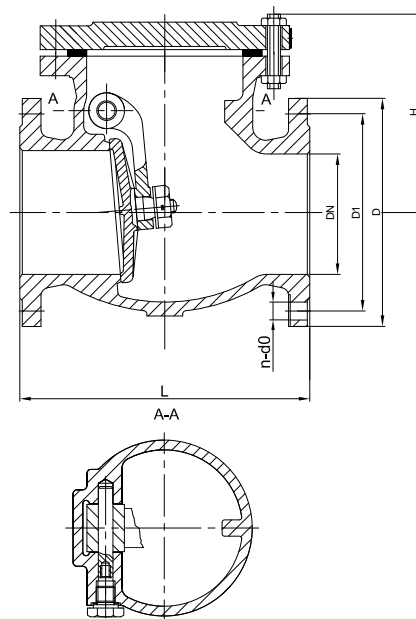
Pressure & Temperature Range

DN	Connection	Max.working pressure (bar)
40-150	PN16	16
200-400	PN10	10

Up to 120°C

Materials

Component	Material	Code
Body	Bronze	CuSn5Zn5Pb5-C(CC491K)
Disc	Albronze	CuAl10Fe5Ni5(AB2)
Pin	Special Brass	CuZn39Pb3(CW614N)
Seat	Bronze	CuSn5Zn5Pb5-C(CC491K)



Dimensions

DN	L	D	D1	H	nxd	Weight(Kg)
40	140	150	110	140	4x18	16
50	150	165	125	150	4x18	19
65	170	185	145	180	8x18	27
80	180	200	160	200	8x18	32
100	190	220	180	300	8x18	48
125	200	250	210	300	8x18	80
150	210	285	240	300	8x22	115
200	230	340	295	300	8x22	178
250	250	395	350	380	12x22	288
300	270	445	400	405	12x22	292
350	290	505	460	430	16x22	297
400	310	565	515	472	16x26	530



Refer standards

Design Standard	BS5154
Face to face	Manufacturer's standard
Threaded connection	ISO228

Features

- Screwed and secured bonnet
- ISO 228 female thread

Options

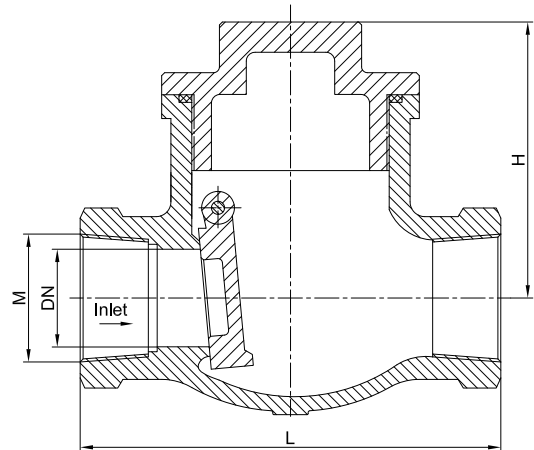
- Other materials and dimensions on request
- Metal seated disc available

Pressure & Temperature Range

DN	Connection	Max.working pressure (bar)
10-100	PN16	Up to 200°C 16

Materials

Component	Material	Code
Body	Stainless steel	GX5CrNiMo19-11-2(1.4408)
Disc	Stainless steel	GX5CrNiMo19-11-2(1.4408)
Bonnet	Stainless steel	GX5CrNiMo19-11-2(1.4408)
Pin	Stainless steel	X5CrNiMo18-10(1.4401)
Gasket	PTFE	-



Dimensions

DN	Pressure rating	L	H	M	Weight
10	PN10	60	38	G 3/8"	0.3
15	PN10	60	38	G 1/2"	0.4
20	PN10	70	49	G 3/4"	0.5
25	PN10	80	55	G 1"	0.8
32	PN10	95	59	G 1-1/4"	1.1
40	PN10	105	69	G1-1/2"	1.5
50	PN10	130	78	G 2"	2.1
65	PN10	160	94	G 2-1/2"	4.6
80	PN10	184	130	G 3"	6.9
100	PN10	215	150	G 4"	10



Refer standards

Design Standard	BS5154
Face to face	Manufacturer's standard
Threaded connection	ISO228

Features

- Screwed and secured bonnet
- ISO 228 female thread

Options

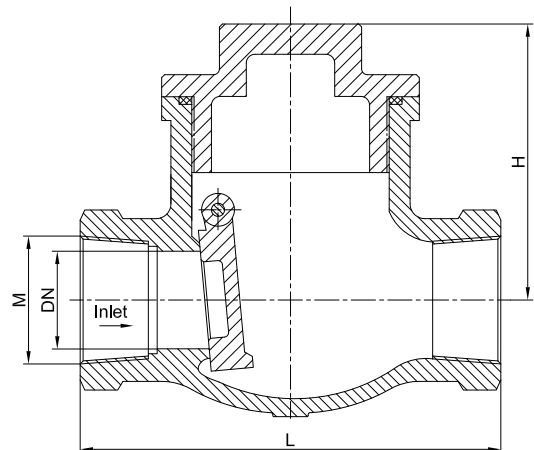
- Other materials and dimensions on request
- Metal seated disc available

Pressure & Temperature Range

DN	Connection	Max.working pressure (bar)
10-100	PN16	Up to 200°C 16

Materials

Component	Material	Code
Body	Bronze	CuSn5Zn5Pb5-C(CC491K)
Disc	Bronze	CuSn5Zn5Pb5-C(CC491K)
Bonnet	Bronze	CuSn5Zn5Pb5-C(CC491K)
Pin	Special Brass	CuZn40Pb
Gasket	PTFE	-



Dimensions

DN	Pressure rating	L	H	M	Weight
10	PN10	60	38	G 3/8"	0.35
15	PN10	60	38	G 1/2"	0.45
20	PN10	70	49	G 3/4"	0.55
25	PN10	80	55	G 1"	0.86
32	PN10	95	59	G 1-1/4"	1.5
40	PN10	105	69	G1-1/2"	1.65
50	PN10	130	78	G 2"	2.5
65	PN10	160	94	G 2-1/2"	5
80	PN10	184	130	G 3"	7.5
100	PN10	215	150	G 4"	10.5



Refer standards

Design Standard	Manufacturer's standard
Face to face	Manufacturer's standard
Flange connection	EN 1092-2 (DIN 2501)

Features

- Elastomer coated ball ensures positive sealing on return flow
- Full bore, quiet operation
- Automatic cleaning

Options

- Lighter/ floating ball
- Other dimensions on request

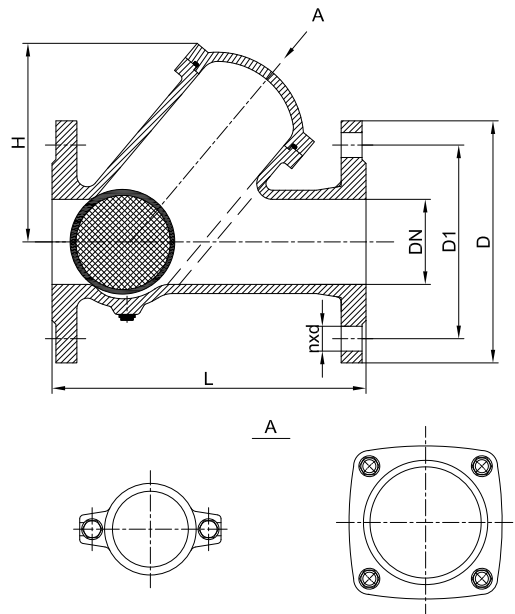
Pressure & Temperature Range

DN	Connection	Max.working pressure (bar)
40-150	PN16	16
200-300	PN10	10

Up to 80°C

Materials

Component	Material	Code
Body	Cast iron	EN-GJL-250 (GG25)
Ball	NBR	NBR
Bonnet	Cast iron	EN-GJL-250 (GG25)
Gasket	NBR	NBR



Dimensions

DN	L	D	D1	H	nxd
40	180	150	110	88	4x19
50	200	165	125	98	4x19
65	240	185	145	115	4x19
80	260	200	160	137	8x19
100	300	220	180	154	8x19
125	350	250	210	180	8x19
150	400	285	240	220	8x23
200	500	340	295	287	8x23
250	600	395	350	355	12x23
300	700	445	400	425	12x23

Ball Check Valve

DIN flanges, Nodular Cast iron

Product Number: S248D



Refer standards

Design Standard	Manufacturer's standard
Face to face	Manufacturer's standard
Flange connection	EN 1092-2 (DIN 2501)

Features

- Elastomer coated ball ensures positive sealing on return flow
- Full bore, quiet operation
- Automatic cleaning

Options

- Lighter/ floating ball
- Other dimensions on request

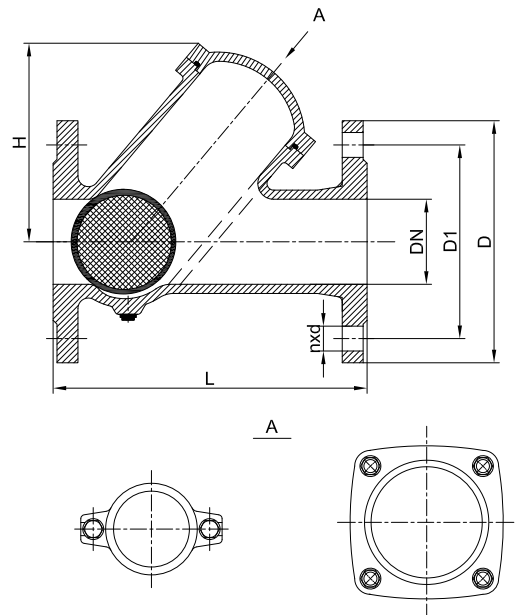
Pressure & Temperature Range

DN	Connection	Max.working pressure (bar)
40-150	PN16	16
200-300	PN10	10

Up to 80°C

Materials

Component	Material	Code
Body	Nodular Cast iron	EN-GJL-400-15 (GGG40)
Ball	NBR	NBR
Bonnet	Nodular Cast iron	EN-GJL-400-15 (GGG40)
Gasket	NBR	NBR



Dimensions

DN	L	D	D1	H	nxd
40	180	150	110	88	4x19
50	200	165	125	98	4x19
65	240	185	145	115	4x19
80	260	200	160	137	8x19
100	300	220	180	154	8x19
125	350	250	210	180	8x19
150	400	285	240	220	8x23
200	500	340	295	287	8x23
250	600	395	350	355	12x23
300	700	445	400	425	12x23



Refer standards

Design Standard	Manufacturer's standard
Face to face	Manufacturer's standard
Thread connection:	ISO 228

Features

- Elastomer coated ball ensures positive sealing on return flow
- Full bore, quiet operation
- Automatic cleaning

Options

- Lighter/ floating ball
- Other materials and dimensions on request

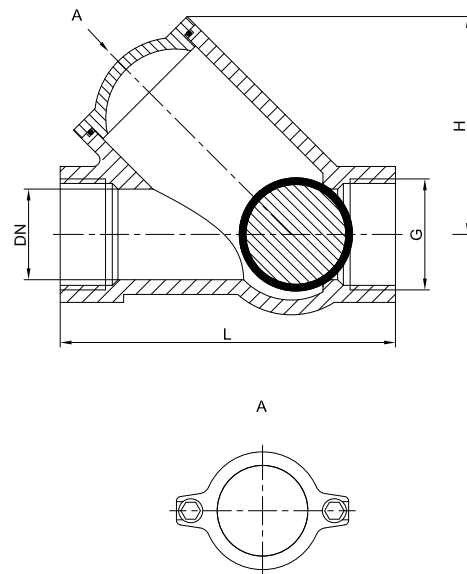
Pressure & Temperature Range

DN	Connection	Max.working pressure (bar)
40-150	PN16	16
200-300	PN10	10

Up to 80°C

Materials

Component	Material	Code
Body	Nodular Cast iron	EN-GJL-400-15 (GGG40)
Ball	NBR	NBR
Bonnet	Nodular Cast iron	EN-GJL-400-15 (GGG40)
Gasket	NBR	NBR



Dimensions

DN	L	H	G	Weight
25	141	85	1"	2.2
32	141	85	1-1/4"	2.2
40	150	90	1-1/2"	3
50	175	115	2"	4
65	210	135	2-1/2"	6.5
80	245	160	3"	8.5

Wafer Lift Check Valve

DIN flanges, Cast Steel
Product Number: S251D



Refer standards

Design Standard	Manufacturer's standard
Face to face	EN558, Series 49 (DIN 3202 K4)
Flange connection	EN 1092-1 (DIN 2501)

Features

- Wafer type

Options

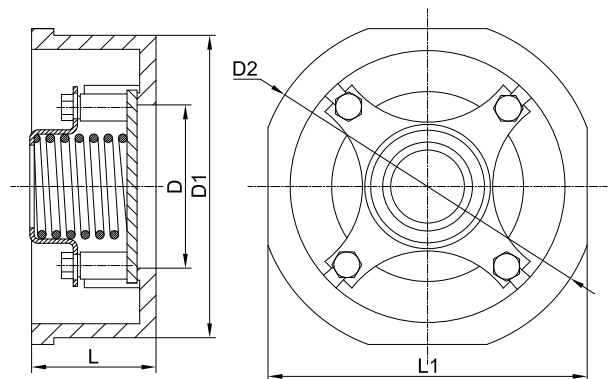
- Other dimensions on request

Pressure & Temperature Range

DN	Connection	Max.working pressure (bar)
15-100	PN40	Up to 200°C 40

Materials

Component	Material	Code
Body	Cast steel	GP240GH(1.0619)
Disc	Stainless steel	GX5CrNiMo19-11-2(1.4408)
Spring	Stainless steel	X5CrNiMo17-12-2(1.4401)
Cap	Stainless steel	X5CrNiMo17-12-2(1.4401)



Dimensions

DN	L	D	D1	D2	L1	Weight(Kg)
15	16	15	45	53	45	0.1
20	19	20	55	63	55	0.2
25	22	25	65	73	65	0.3
32	28	32	79	84	79	0.5
40	32	38	89	94	89	0.7
50	40	50	99	107	99	1.1
65	46	62	118	126	118	1.6
80	50	76.5	134	144	134	1.8
100	60	98	154	164	154	3.3

Wafer Lift Check Valve

DIN flanges, Stainless steel

Product Number: S251D



Refer standards

Design Standard	Manufacturer's standard
Face to face	EN558, Series 49 (DIN 3202 K4)
Flange connection	EN 1092-1 (DIN 2501)

Features

- Wafer type

Options

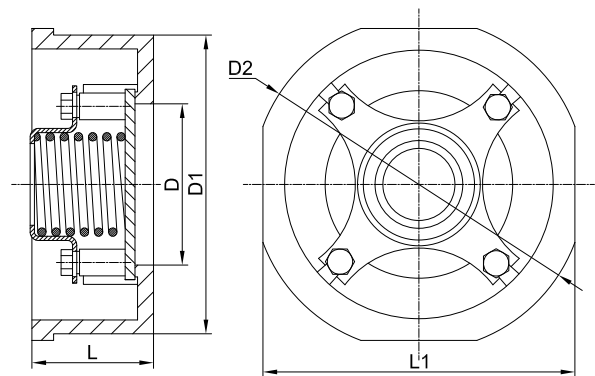
- Other dimensions on request

Pressure & Temperature Range

DN	Connection	Max.working pressure (bar)
15-100	PN40	Up to 200°C 40

Materials

Component	Material	Code
Body	Stainless steel	GX5CrNiMo19-11-2(1.4408)
Disc	Stainless steel	GX5CrNiMo19-11-2(1.4408)
Spring	Stainless steel	X5CrNiMo17-12-2(1.4401)
Cap	Stainless steel	X5CrNiMo17-12-2(1.4401)



Dimensions

DN	L	D	D1	D2	L1	Weight(Kg)
15	16	15	45	53	45	0.1
20	19	20	55	63	55	0.2
25	22	25	65	73	65	0.3
32	28	32	79	84	79	0.5
40	32	38	89	94	89	0.7
50	40	50	99	107	99	1.1
65	46	62	118	126	118	1.6
80	50	76.5	134	144	134	1.8
100	60	98	154	164	154	3.3

Wafer Lift Check Valve

DIN flanges, Bronze

Product Number: S251D



Refer standards

Design Standard	Manufacturer's standard
Face to face	EN558, Series 49 (DIN 3202 K4)
Flange connection	EN 1092-1 (DIN 2501)

Features

- Wafer type

Options

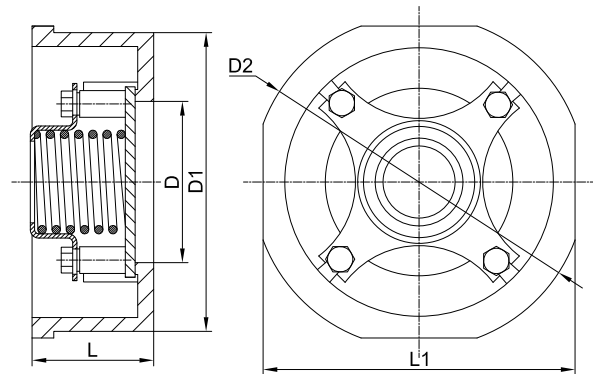
- Stainless steel disc
- Other dimensions on request

Pressure & Temperature Range

DN	Connection	Max.working pressure (bar)
15-100	PN40	Up to 200°C 40

Materials

Component	Material	Code
Body	Bronze	CuSn5Zn5Pb5-C(CC491K)
Disc	Bronze	CuSn5Zn5Pb5-C(CC491K)
Spring	Stainless steel	X5CrNiMo17-12-2(1.4401)
Cap	Bronze	CuSn5Zn5Pb5-C(CC491K)



Dimensions

DN	L	D	D1	D2	L1	Weight(Kg)
15	16	15	45	53	45	0.1
20	19	20	55	63	55	0.22
25	22	25	65	73	65	0.33
32	28	32	79	84	79	0.55
40	32	38	89	94	89	0.77
50	40	50	99	107	99	1.2
65	46	62	118	126	118	1.8
80	50	76.5	134	144	134	2.0
100	60	98	154	164	154	3.6



Refer standards

Design Standard	DIN HNA Sr6 Form B-with closing device and handwheel
Face to face	DIN HNA Sr6
Flange connection	EN 1092-1 (DIN 2501)

Features

- Different inlet/outlet diameter

Options

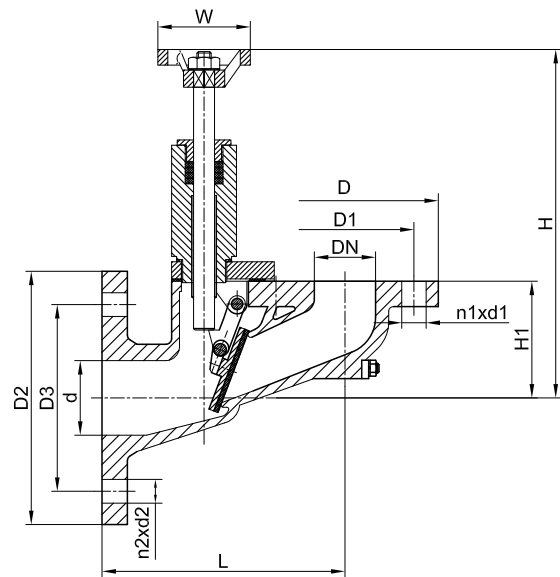
- Other dimensions on request
- Metal seated disc available

Pressure & Temperature Range

DN	Connection	Max.working pressure (bar)
50-250	PN10	Up to 80°C 4

Materials

Component	Material	Code
Body	Cast steel	GP240GH(1.0619)
Disc	Bronze+NBR	CuSn5Zn5Pb5-C(CC491K) +NBR
Stem	Specail Brass	CuZn40Pb
Cap	Stainless steel	X5CrNi18-10 (1.4301)



Dimensions

DN	L	D	D1	D2	D3	d	n1xd1	n2xd2	H1	H	W	Weight(Kg)
50	180	165	125	200	160	70	4X18	8X18	90	335	100	13.5
65	200	185	145	220	180	85	8X18	8X18	100	345	140	15.8
80	215	200	160	250	210	100	8X18	8X18	108	360	140	22.2
100	250	220	180	285	240	130	8X18	8X22	130	370	140	26.8
125	290	250	210	340	295	158	8X18	8X22	152	460	180	38.2
150	330	285	240	395	350	190	8X22	12X22	176	490	180	45.3
200	425	340	295	445	400	240	8X22	12X22	180	580	180	75.5
250	630	395	350	505	460	300	12X22	12X26	300	730	200	102.5



Refer standards

Design Standard	DIN HNA Sr6 Form B-with closing device and handwheel
Face to face	DIN HNA Sr6
Flange connection	EN 1092-3 (DIN 2501)

Features

- Different inlet/outlet diameter

Options

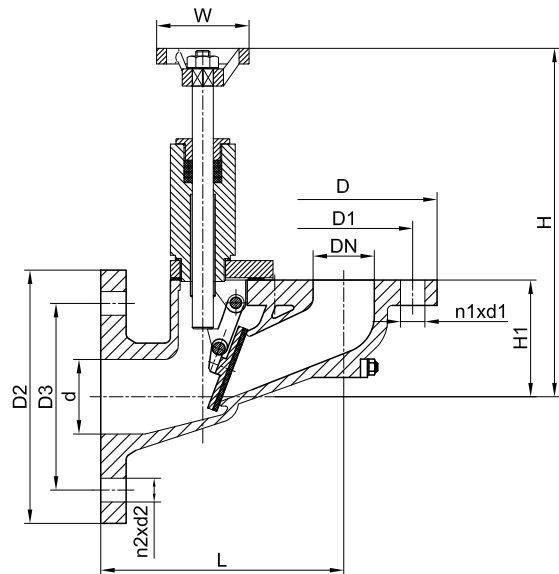
- Other dimensions on request
- Metal seated disc available

Pressure & Temperature Range

DN	Connection	Max.working pressure (bar)
50-250	PN10	Up to 80°C 4

Materials

Component	Material	Code
Body	Bronze	CuSn5Zn5Pb5-C(CC491K)
Disc	Bronze	CuSn5Zn5Pb5-C(CC491K)
Stem	Specail Brass	CuZn40Pb
Seat	Bronze	CuSn5Zn5Pb5-C(CC491K)



Dimensions

DN	L	D	D1	D2	D3	d	n1xd1	n2xd2	H1	H	W	Weight(Kg)
50	180	165	125	200	160	70	4X18	8X18	90	335	100	13.5
65	200	185	145	220	180	85	8X18	8X18	100	345	140	15.8
80	215	200	160	250	210	100	8X18	8X18	108	360	140	22.2
100	250	220	180	285	240	130	8X18	8X22	130	370	140	26.8
125	290	250	210	340	295	158	8X18	8X22	152	460	180	38.2
150	330	285	240	395	350	190	8X22	12X22	176	490	180	45.3
200	425	340	295	445	400	240	8X22	12X22	180	580	180	75.5
250	630	395	350	505	460	300	12X22	12X26	300	730	200	102.5



Refer standards

Design Standard	Manufacturer's standard
Face to face	Manufacturer's standard
Flange connection	EN 1092-1 (DIN 2501)

Features

- Different inlet/outlet diameter

Options

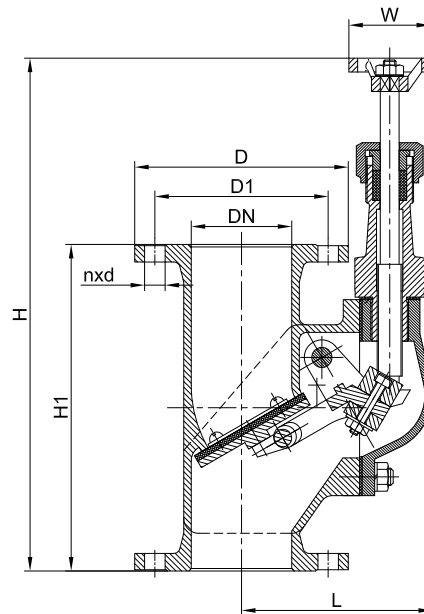
- Other dimensions on request
- Metal seated disc available

Pressure & Temperature Range

DN	Connection	Max.working pressure (bar)
50-150	PN6	Up to 80°C 4

Materials

Component	Material	Code
Body	Cast steel	GP240GH (1.0619)
Disc	Bronze+NBR	CuSn5Zn5Pb5-C(CC491K) +NBR
Stem	Specail Brass	CuZn40Pb
Seat	Stainless steel	X5CrNi18-10 (1.4301)



Dimensions

DN	L	D	D1	nxd	H1	H	W	Weight(Kg)
50	140	140	110	4x14	210	400	100	15
65	142	160	130	4x14	240	425	100	18
80	155	190	150	4x18	260	440	100	23.5
100	172	210	170	4x18	280	470	100	29.6
125	195	240	200	8x18	330	510	100	43.5
150	213	265	225	8x18	360	545	140	56.8



Refer standards

Design Standard	Manufacturer's standard
Face to face	Manufacturer's standard
Flange connection	EN 1092-3 (DIN 2501)

Features

- Different inlet/outlet diameter

Options

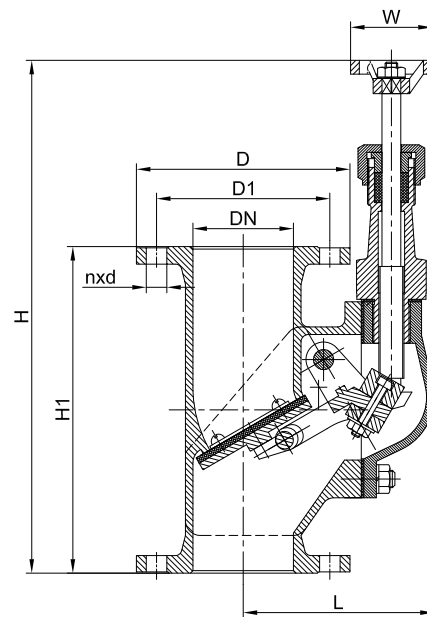
- Other dimensions on request
- Metal seated disc available

Pressure & Temperature Range

DN	Connection	Max.working pressure (bar)
50-150	PN6	Up to 80°C 4

Materials

Component	Material	Code
Body	Bronze	CuSn5Zn5Pb5-C(CC491K)
Disc	Bronze	CuSn5Zn5Pb5-C(CC491K)
Stem	Specail Brass	CuZn40Pb
Seat	Bronze	CuSn5Zn5Pb5-C(CC491K)



Dimensions

DN	L	D	D1	nxd	H1	H	W	Weight(Kg)
50	140	140	110	4x14	210	400	100	15
65	142	160	130	4x14	240	425	100	18
80	155	190	150	4x18	260	440	100	23.5
100	172	210	170	4x18	280	470	100	29.6
125	195	240	200	8x18	330	510	100	43.5
150	213	265	225	8x18	360	545	140	56.8



Refer standards

Design Standard	DIN 86251 (DIN 3356)
Face to face	EN558, Series 1 (DIN 3202 F1)
Flange connection	EN 1092-2 (DIN 2501)

Features

- Metal seated
- Outside screw & yoke and rising handwheel

Options

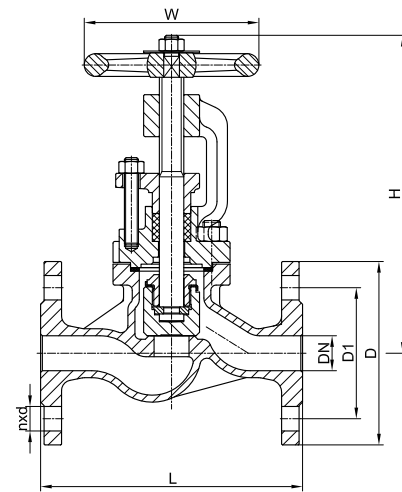
- Screwed-down non-return and regulating disc
- Stainless steel trim
- With open/close indication

Pressure & Temperature Range

DN	Connection	Max.working pressure (bar)	
		Up to 120°C	180°C
15-150	PN16	16	10
200-250	PN10	10	6
300-350	PN6	6	4

Materials

Component	Material	Code
Body	Cast Iron	EN-GJL-250 (GG25)
Bonnet	Cast Iron	EN-GJL-250 (GG25)
Disc(<=65)	Bronze	CuSn5Zn5Pb5-C(CC491K)
(>=80)	Ductile Iron	EN-GJS-400-15(GGG40)
Stem	Special Brass	CuZn40Pb2(CW617N)
Seat	Bronze	CuSn5Zn5Pb5-C(CC491K)
Gland Packing	Graphite	-
Bonnet Gasket	Graphite	-
Hand wheel	Cast Iron	EN-GJL-250 (GG25)



Dimensions

DN	L	D	D1	H	W	nxd	Weight(Kg)
15	130	95	65	165	120	4x14	4.2
20	150	105	75	165	120	4x14	4.2
25	160	115	85	175	140	4x14	5.5
32	180	140	100	180	140	4x18	7.5
40	200	150	110	220	160	4x18	11.5
50	230	165	125	230	160	4x18	13.8
65	290	185	145	245	180	4x18	19.1
80	310	200	160	295	200	8x18	25.8
100	350	220	180	330	225	8x18	36.2
125	400	250	210	365	250	8x18	56.5
150	480	285	240	420	300	8x22	76.2
200	600	340	295	510	400	8x22	136.8
250	730	395	350	600	520	12x22	217.5
300	850	445	400	670	520	12x22	307.6
350	980	505	460	755	640	16x22	407.7



Refer standards

Design Standard	DIN 86251 (DIN 3356)
Face to face	EN558, Series 1 (DIN 3202 F1)
Flange connection	EN 1092-2 (DIN 2501)

Features

- Manually operated
- Metal seated
- Outside screw & yoke and rising handwheel

Options

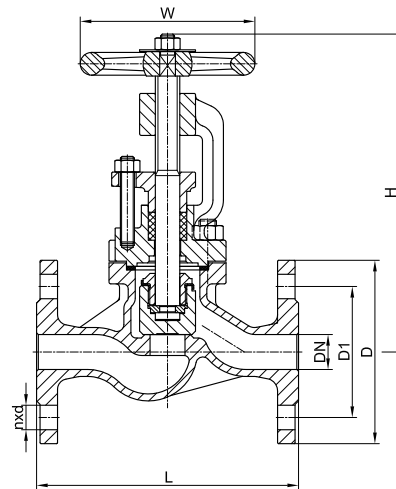
- Screwed-down non-return and regulating disc
- Stainless steel trim
- With open/close indication
- Nodular Cast Iron EN-GJL-400-18-LT (GGG40.3) available

Pressure & Temperature Range

DN	Connection	Max.working pressure (bar)	
		Up to 120°C	180°C
15-150	PN16	16	10
200-250	PN10	10	6
300-350	PN6	6	4

Materials

Component	Material	Code
Body	Nodular Cast Iron	EN-GJS-400-15(GGG40)
Bonnet	Nodular Cast Iron	EN-GJS-400-15(GGG40)
Disc(<=65)	Bronze	CuSn5Zn5Pb5-C(CC491K)
(>=80)	Ductile Iron	EN-GJS-400-15(GGG40)
Stem	Special Brass	CuZn40Pb2(CW617N)
Seat	Bronze	CuSn5Zn5Pb5-C(CC491K)
Gland Packing	Graphite	-
Bonnet Gasket	Graphite	-
Hand wheel	Cast Iron	EN-GJL-250 (GG25)



Dimensions

DN	L	D	D1	H	W	nxd	Weight(Kg)
15	130	95	65	165	120	4x14	4.2
20	150	105	75	165	120	4x14	4.2
25	160	115	85	175	140	4x14	5.5
32	180	140	100	180	140	4x18	7.5
40	200	150	110	220	160	4x18	11.5
50	230	165	125	230	160	4x18	13.8
65	290	185	145	245	180	4x18	19.1
80	310	200	160	295	200	8x18	25.8
100	350	220	180	330	225	8x18	36.2
125	400	250	210	365	250	8x18	56.5
150	480	285	240	420	300	8x22	76.2
200	600	340	295	510	400	8x22	136.8
250	730	395	350	600	520	12x22	217.5
300	850	445	400	670	520	12x22	307.6
350	980	505	460	755	640	16x22	407.7



Refer standards

Design Standard	DIN EN13709 (DIN 3356)
Face to face	EN558, Series 1 (DIN 3202 F1)
Flange connection	EN 1092-1 (DIN 2501)

Features

- Metal seated
- Outside screw & yoke and rising handwheel

Options

- Screwed-down non-return and regulating disc
- Bronze trim
- With open/close indication
- Pressure rating PN25& PN40

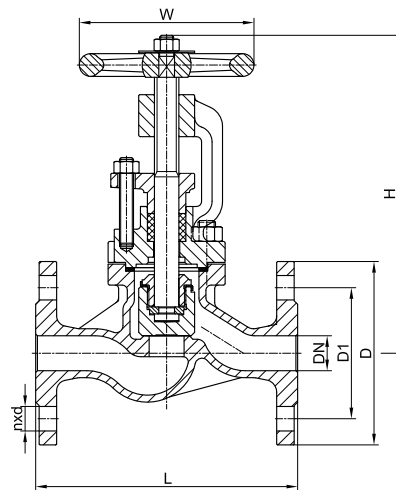
Pressure & Temperature Range

DN	Connection	Max.working pressure (bar)	
		Up to 120°C	180°C
15-150	PN16	16	10

Alternative for steam up to 400°C is available

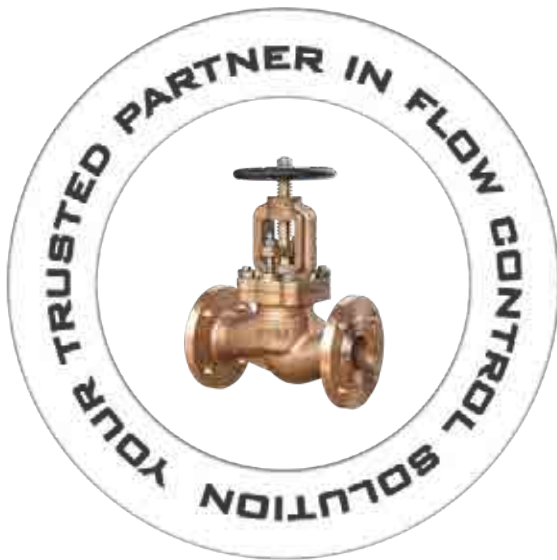
Materials

Component	Material	Code
Body	Cast steel	GP240GH(1.0619)
Bonnet	Cast steel	GP240GH(1.0619)
Disc(<=65)	Stainless steel	X20Cr13(1.4021)
(>=80)	Cast steel	GP240GH(GS-C25)
Stem	Stainless steel	X20Cr13(1.4021)
Seat	Deposited Stellite	STL
Gland Packing	Graphite	-
Bonnet Gasket	Graphite	-
Hand wheel	Cast Iron	EN-GJL-250 (GG25)



Dimensions

DN	L	D	D1	H	W	nxd	Weight(Kg)
15	130	95	65	165	120	4x14	4.2
20	150	105	75	165	120	4x14	4.8
25	160	115	85	175	140	4x14	5.5
32	180	140	100	180	140	4x18	7.5
40	200	150	110	220	160	4x18	11.5
50	230	165	125	230	160	4x18	13.8
65	290	185	145	245	180	8x18	20.2
80	310	200	160	295	200	8x18	25.8
100	350	235	190	330	225	8x22	38.2
125	400	270	220	365	250	8x26	62.3
150	480	300	250	420	300	8x26	85.6



Refer standards

Design Standard	DIN 86260 (DIN 3356)
Face to face	EN558, Series 1 (DIN 3202 F1)
Flange connection	EN 1092-3 (DIN 2501)

Features

- Metal seated
- Outside screw & yoke and rising handwheel

Options

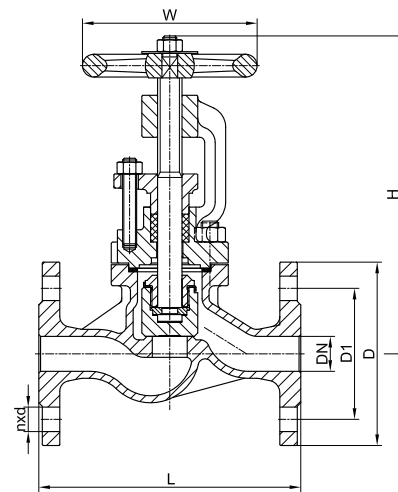
- Screwed-down non-return and regulating disc
- Other dimensions and materials on request

Pressure & Temperature Range

DN	Connection	Max.working pressure (bar)	
		Up to 120°C	180°C
15-150	PN16	16	10
200	PN10	10	6
250-300	PN6	6	4

Materials

Component	Material	Code
Body	Bronze	CuSn5Zn5Pb5-C(CC491K)
Bonnet	Bronze	CuSn5Zn5Pb5-C(CC491K)
Disc	Bronze	CuSn5Zn5Pb5-C(CC491K)
Stem	Special Brass	CuZn40Pb2(CW617N)
Seat	Deposited Stellite	CuSn5Zn5Pb5-C(CC491K)
Gland Packing	Graphite	-
Bonnet Gasket	Dixo 4000	-
Hand wheel	Cast Iron	EN-GJL-250 (GG25)



Dimensions

DN	L	D	D1	H	W	nxd	Weight(Kg)
15	130	95	65	140	100	4x14	2.66
20	150	105	75	150	100	4x14	3
25	160	115	85	160	100	4x14	4
32	180	140	100	165	100	4x18	5.2
40	200	150	110	195	140	4x18	7.4
50	230	165	125	205	140	4x18	9.5
65	290	185	145	255	160	4x18	12.5
80	310	200	160	290	200	8x18	19
100	350	220	180	335	200	8x18	24.5
125	400	250	210	405	250	8x18	41
150	480	285	240	445	320	8x22	62
200	600	345	295	530	320	8x22	120
250	730	395	350	640	400	12x22	203
300	850	445	400	720	400	12x22	279



Refer standards

Design Standard	DIN EN13709 (DIN 3356)
Face to face	EN558, Series 1 (DIN 3202 F1)
Flange connection	EN 1092-1 (DIN 2501)

Features

- Metal seated
- Outside screw & yoke and rising handwheel

Options

- Screwed-down non-return and regulating disc
- With open/close indication
- Pressure rating PN25& PN40

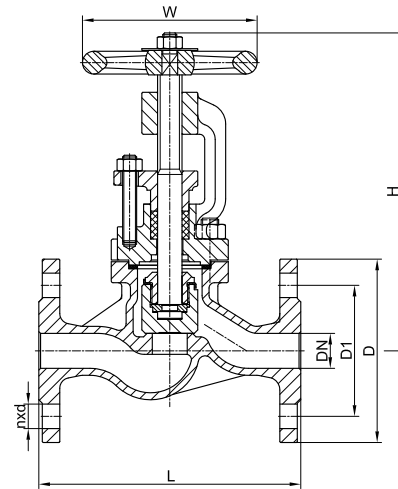
Pressure & Temperature Range

DN	Connection	Max.working pressure (bar)	
		Up to 120°C	180°C
15-150	PN16	16	10

Alternative for steam up to 400°C is available

Materials

Component	Material	Code
Body	Stainless steel	GX5CrNiMo19-11-2(1.4408)
Bonnet	Stainless steel	GX5CrNiMo19-11-2(1.4408)
Disc	Stainless steel	GX5CrNiMo19-11-2(1.4408)
Stem	Stainless steel	X5CrNiMo18-10(1.4401)
Seat	Deposited Stellite	GX5CrNiMo19-11-2(1.4408)
Gland Packing	Graphite	-
Bonnet Gasket	Graphite	-
Hand wheel	Cast Iron	EN-GJL-250 (GG25)



Dimensions

DN	L	D	D1	H	W	nxd	Weight(Kg)
15	130	95	65	165	120	4x14	4.2
20	150	105	75	165	120	4x14	4.8
25	160	115	85	175	140	4x14	5.5
32	180	140	100	180	140	4x18	7.5
40	200	150	110	220	160	4x18	11.5
50	230	165	125	230	160	4x18	13.8
65	290	185	145	245	180	8x18	20.2
80	310	200	160	295	200	8x18	25.8
100	350	235	190	330	225	8x22	38.2
125	400	270	220	365	250	8x26	62.3
150	480	300	250	420	300	8x26	85.6



Refer standards

Design Standard	DIN 86251 (DIN 3356)
Face to face	EN558, Series 8 (DIN 3202 F32)
Flange connection	EN 1092-2 (DIN 2501)

Features

- Metal seated
- Outside screw & yoke and rising handwheel

Options

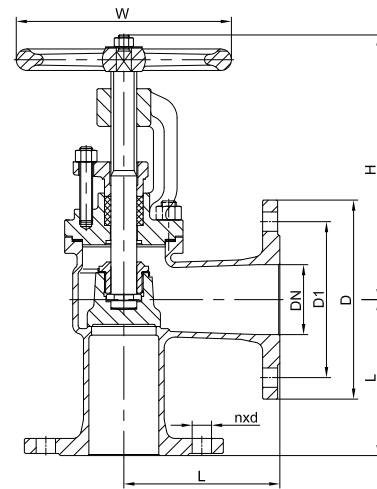
- Screwed-down non-return and regulating disc
- Stainless steel trim
- With open/close indication
- Nodular Cast Iron EN-GJL-400-18-LT (GGG40.3) GJL-250 (GG25) also available

Pressure & Temperature Range

DN	Connection	Max.working pressure (bar)	
		Up to 120°C	180°C
15-150	PN16	16	10
200-250	PN10	10	6
300-350	PN6	6	4

Materials

Component	Material	Code
Body	Nodular Cast Iron	EN-GJS-400-15 (GGG40)
Bonnet	Nodular Cast Iron	EN-GJS-400-15 (GGG40)
Disc(<=65)	Bronze	CuSn5Zn5Pb5-C(CC491K)
(>=80)	Ductile Iron	EN-GJS-400-15(GGG40)
Stem	Special Brass	CuZn40Pb2(CW617N)
Seat	Bronze	CuSn5Zn5Pb5-C(CC491K)
Gland Packing	Graphite	-
Bonnet Gasket	Graphite	-
Hand wheel	Cast Iron	EN-GJL-250 (GG25)



Dimensions

DN	L	D	D1	H	W	nxd	Weight(Kg)
15	90	95	65	165	120	4x14	4
20	95	105	75	165	120	4x14	4.5
25	100	115	85	175	140	4x14	5.3
32	105	140	100	180	140	4x18	6.8
40	115	150	110	220	160	4x18	9.7
50	125	165	125	230	160	4x18	12.1
65	145	185	145	245	180	4x18	16.3
80	155	200	160	295	200	8x18	21.2
100	175	220	180	330	225	8x18	33.4
125	200	250	210	365	250	8x18	43.1
150	225	285	240	420	300	8x22	71
200	275	340	295	510	400	8x22	112
250	325	395	350	600	520	12x22	161.5
300	375	445	400	670	520	12x22	228
350	425	505	460	755	640	16x22	308



Refer standards

Design Standard	DIN 86251 (DIN 3356)
Face to face	EN558, Series 8 (DIN 3202 F32)
Flange connection	EN 1092-1 (DIN 2501)

Features

- Metal seated
- Outside screw & yoke and rising handwheel

Options

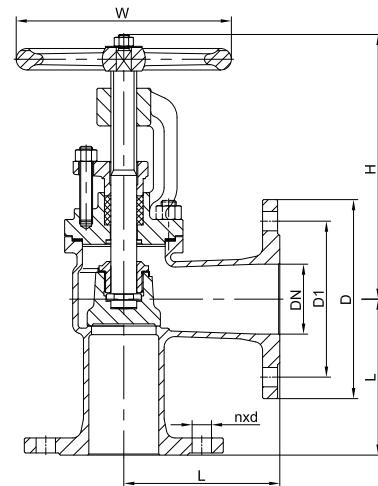
- Screwed-down non-return and regulating disc
- Bronze trim
- With open/close indication
- Pressure rating PN25& PN40

Pressure & Temperature Range

DN	Connection	Max.working pressure (bar)	
		Up to 120°C	180°C
15-150	PN40	40	25

Materials

Component	Material	Code
Body	Cast steel	GP240GH(1.0619)
Bonnet	Cast steel	GP240GH(1.0619)
Disc(<=65)	Stainless steel	X20Cr13(1.4201)
(>=80)	Cast steel	GP240GH(1.0619)
Stem	Stainless steel	X20Cr13(1.4021)
Seat	Deposited Stellite	STL
Gland Packing	Graphite	-
Bonnet Gasket	Graphite	-
Hand wheel	Cast Iron	EN-GJL-250 (GG25)



Dimensions

DN	L	D	D1	H	W	nxd	Weight(Kg)
15	90	95	65	165	120	4x14	4
20	95	105	75	165	120	4x14	4.5
25	100	115	85	175	140	4x14	5
32	105	140	100	180	140	4x18	8
40	115	150	110	220	160	4x18	10.1
50	125	165	125	230	160	4x18	13.2
65	145	185	145	245	180	8x18	18.1
80	155	200	160	295	200	8x18	25.1
100	175	235	190	330	225	8x22	38.1
125	200	270	220	365	250	8x26	50
150	225	300	250	420	300	8x26	75



Refer standards

Design Standard	DIN 86251 (DIN 3356)
Face to face	EN558, Series 8 (DIN 3202 F32)
Flange connection	EN 1092-1 (DIN 2501)

Features

- Metal seated
- Outside screw & yoke and rising handwheel

Options

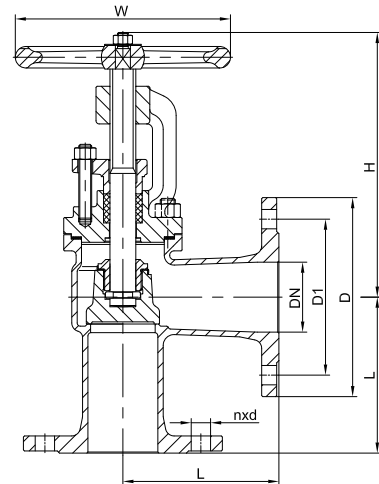
- Screwed-down non-return and regulating disc
- Bronze trim
- With open/close indication

Pressure & Temperature Range

DN	Connection	Max.working pressure (bar)	
		Up to 120°C	180°C
15-150	PN40	40	25

Materials

Component	Material	Code
Body	Stainless steel	GX5CrNiMo19-11-2(1.4408)
Bonnet	Stainless steel	GX5CrNiMo19-11-2(1.4408)
Disc	Stainless steel	GX5CrNiMo19-11-2(1.4408)
Stem	Stainless steel	X5CrNiMo18-10(1.4401)
Seat	Deposited Stellite	GX5CrNiMo19-11-2(1.4408)
Gland Packing	Graphite	-
Bonnet Gasket	Graphite	-
Hand wheel	Cast Iron	EN-GJL-250 (GG25)



Dimensions

DN	L	D	D1	H	W	nxd	Weight(Kg)
15	90	95	65	165	120	4x14	4
20	95	105	75	165	120	4x14	4.5
25	100	115	85	175	140	4x14	5
32	105	140	100	180	140	4x18	8
40	115	150	110	220	160	4x18	10.1
50	125	165	125	230	160	4x18	13.2
65	145	185	145	245	180	8x18	18.1
80	155	200	160	295	200	8x18	25.1
100	175	235	190	330	225	8x22	38.1
125	200	270	220	365	250	8x26	50
150	225	300	250	420	300	8x26	75



Refer standards

Design Standard	DIN 86251 (DIN 3356)
Face to face	EN558, Series 8 (DIN 3202 F32)
Flange connection	EN 1092-3 (DIN 2501)

Features

- SDNR
- Manually operated
- Metal seated
- Outside screw & yoke and rising handwheel

Options

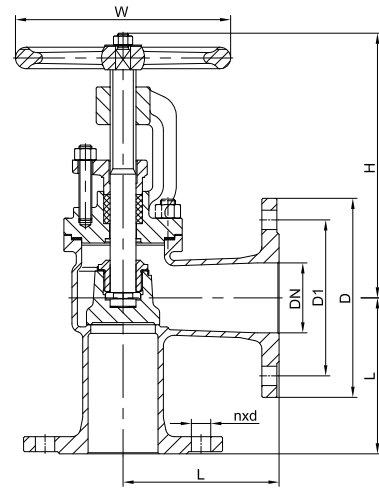
- Screwed-down non-return and regulating disc
- Other dimensions and materials on request

Pressure & Temperature Range

DN	Connection	Max.working pressure (bar)	
		Up to 120°C	180°C
15-150	PN16	16	10
200	PN10	10	6
250-300	PN6	6	4

Materials

Component	Material	Code
Body	Bronze	CuSn5Zn5Pb5-C(CC491K)
Bonnet	Bronze	CuSn5Zn5Pb5-C(CC491K)
Disc	Bronze	CuSn5Zn5Pb5-C(CC491K)
Stem	Special Brass	CuZn40Pb2(CW617N)
Seat	Deposited Stellite	CuSn5Zn5Pb5-C(CC491K)
Gland Packing	Graphite	-
Bonnet Gasket	Dixo 4000	-
Hand wheel	Cast Iron	EN-GJL-250 (GG25)



Dimensions

DN	L	D	D1	H	W	nxd	Weight(Kg)
15	90	95	65	130	100	4x14	3.8
20	95	105	75	130	100	4x14	4.0
25	100	115	85	150	100	4x14	4.5
32	105	140	100	155	100	4x18	7.2
40	115	150	110	180	140	4x18	9.0
50	125	165	125	185	140	4x18	11.7
65	145	185	145	225	160	4x18	16.2
80	155	200	160	260	200	8x18	22.5
100	175	220	180	290	200	8x18	35.1
125	200	250	210	325	250	8x18	45
150	225	285	240	335	320	8x22	67.5
200	275	345	295	390	320	8x22	96
250	325	395	350	520	400	12x22	155
300	375	445	400	550	400	12x22	220



Refer standards

Design Standard BS 5154

End Standard ISO 228-1:2003

Features

- Threaded connection
- Metal seal

Options

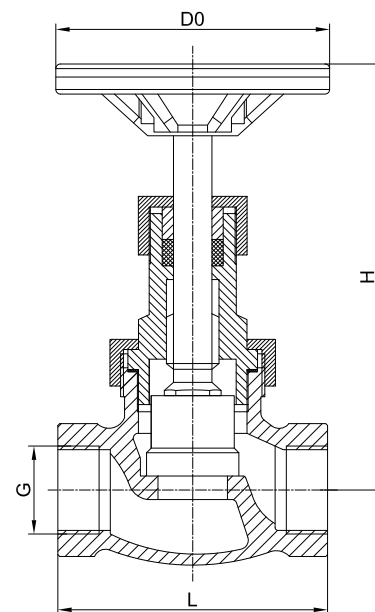
- Other dimension and materials on request

Pressure & Temperature Range

DN	Max.working pressure (bar)		
	up to 120°C	150°C	up to 225°C (steam up to 180°C)
15-80	16	10	6

Materials

Component	Material	Code
Body	Bronze	CuSn5Zn5Pb5-C
bonnet	Bronze	CuSn5Zn5Pb5-C
Disc	Bronze	CuSn5Zn5Pb5-C
Stem	Brass	CW710R
Gasket	PTFE	-



Dimensions

DN	G (BSP)	L	H	D0	Weight(Kg)
15	G1/2"	65	95	60	0.5
20	G3/4"	75	110	80	0.7
25	G1"	90	115	80	1.2
32	G1 1/4"	105	135	90	1.6
40	G2 1/2"	120	145	100	2.3
50	G2"	145	165	120	3.4
65	G2 1/2"	170	230	160	7.0
80	G3"	200	250	200	12.0



Refer standards

Design Standard	DIN EN 1171 (DIN 3352 T2)
Face to face	EN558, Series 14 (DIN 3202 F4)
Flange connection	EN 1092-2 (DIN 2501)

Features

- Manually operated
- Metal seated
- Non rising stem with open/close indicator and bolted bonnet

Options

- With drain plug
- With actuator
- Stainless steel trim

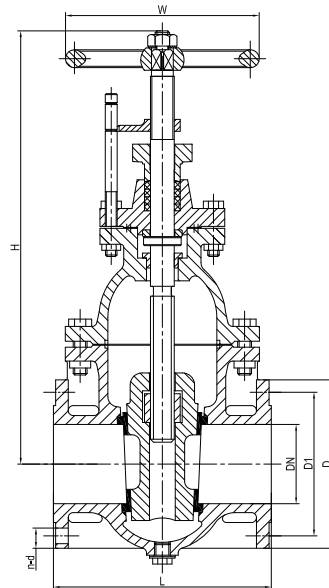
Pressure & Temperature Range

DN	Connection	Max.working pressure (bar)
40-200	PN10	10
250-300	PN6	6

Up to 120°C

Materials

Component	Material	Code
Body	Cast Iron	EN-GJL-250 (GG25)
Bonnet	Cast Iron	EN-GJL-250 (GG25)
Wedge(<=100)	Bronze	CuSn5Zn5Pb5-C(CC491K)
(>=125)	Cast Iron	EN-GJL-250 (GG25)
Stem	Special Brass	CuSn39Pb3(CW614N)
Seat	Bronze	CuSn5Zn5Pb5-C(CC491K)
Gland Packing	PTFE	-
Bonnet Gasket	Asbestos free	-
Hand wheel	Cast Iron	EN-GJL-250 (GG25)



Dimensions

DN	L	D	D1	H	W	nxd	Weight(Kg)
40	140	150	110	270	140	4x18	11.0
50	150	165	125	270	140	4x18	13.0
65	170	185	145	295	160	4x18	17.0
80	180	200	160	325	160	8x18	20.0
100	190	220	180	360	200	8x18	28.0
125	200	250	210	450	200	8x18	40.0
150	210	285	240	500	200	8x22	50.0
200	230	340	295	620	250	8x22	85.0
250	250	395	350	730	315	12x22	133.5
300	270	445	400	860	315	12x22	180.0

Non rising stem, DIN flanges, Nodular cast iron

Product Number: S205D



Pressure & Temperature Range

DN	Connection	Max.working pressure (bar)	
		Up to 120°C	
40-150	PN16	16	
200-300	PN10	10	

Materials

Component	Material	Code
Body	Nodular Cast Iron	EN-GJL-400-15 (GGG40)
Bonnet	Nodular Cast Iron	EN-GJL-400-15 (GGG40)
Wedge	Nodular Cast Iron	EN-GJL-400-15 (GGG40)
Stem	Special Brass	CuSn39Pb3(CW614N)
Seat	Bronze	CuSn5Zn5Pb5-C(CC491K)
Gland Packing	PTFE	-
Bonnet Gasket	Asbestos free	-
Hand wheel	Cast Iron	EN-GJL-250 (GG25)

Dimensions

DN	L	D	D1	H	W	nxd	Weight(Kg)
40	140	150	110	270	140	4x18	11.0
50	150	165	125	270	140	4x18	13.0
65	170	185	145	295	160	4x18	17.0
80	180	200	160	325	160	8x18	20.0
100	190	220	180	360	200	8x18	28.0
125	200	250	210	450	200	8x18	40.0
150	210	285	240	500	200	8x22	50.0
200	230	340	295	620	250	8x22	85.0
250	250	395	350	730	315	12x22	133.5
300	270	445	400	860	315	12x22	180.0

Refer standards

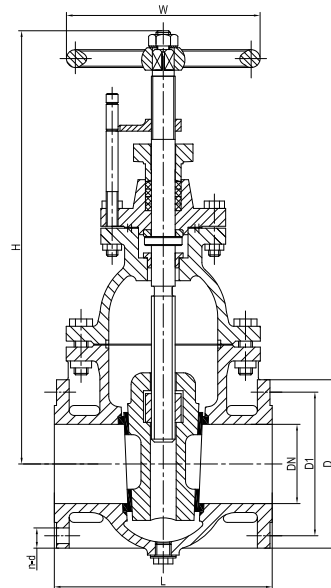
Design Standard	DIN EN 1171 (DIN 3352 T2)
Face to face	EN558, Series 14 (DIN 3202 F4)
Flange connection	EN 1092 (DIN 2501)

Features

- Manually operated
- Metal seated
- Non rising stem with open/close indicator and bolted bonnet

Options

- With drain plug
- With actuator
- Stainless steel trim
- Nodular Cast Iron EN-GJL-400-18-LT (GGG40.3) available
- Soft seated





Refer standards

Design Standard	DIN EN 1171 (DIN 3352 T2)
Face to face	EN558, Series 14 (DIN 3202 F4)
Flange connection	EN 1092-1 (DIN 2501)

Features

- Metal seated
- Non rising stem with open/close indicator and bolted bonnet

Options

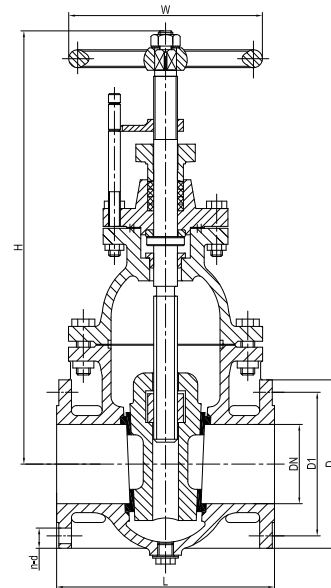
- Gearbox, electric or pneumatic actuators
- Larger dimensions on request

Pressure & Temperature Range

DN	Connection	Max.working pressure (bar)
40-150	PN16	Up to 120°C 10
200-300	PN6	6

Materials

Component	Material	Code
Body	Cast steel	GP240GH(1.0619)
Bonnet	Cast steel	GP240GH(1.0619)
Wedge	Cast steel	GP240GH(1.0619) +Deposited stellite
Stem	Stainless steel	X5CrNi18-10(1.4301)
Seat	Stainless steel	X20Cr13(1.4021)
Gland Packing	PTFE	-
Bonnet Gasket	NBR bonded aramid	-
Hand wheel	Cast Iron	EN-GJL-250 (GG25)



Dimensions

DN	L	D	D1	H	W	nxd	Weight(Kg)
40	140	150	110	270	140	4x18	15.0
50	150	165	125	270	140	4x18	17.0
65	170	185	145	295	160	4x18	20.0
80	180	200	160	325	160	8x18	27.0
100	190	220	180	360	200	8x18	34.0
125	200	250	210	450	200	8x18	50.0
150	210	285	240	500	200	8x22	60.0
200	230	340	295	620	250	8x22	100
250	250	395	350	730	315	12x22	165
300	270	445	400	860	315	12x22	220



Refer standards

Design Standard	DIN EN 1171 (DIN 3352 T2)
Face to face	EN558, Series 14 (DIN 3202 F4)
Flange connection	EN 1092 (DIN 2501)

Features

- Metal seated
- Non rising stem with open/close indicator and bolted bonnet

Options

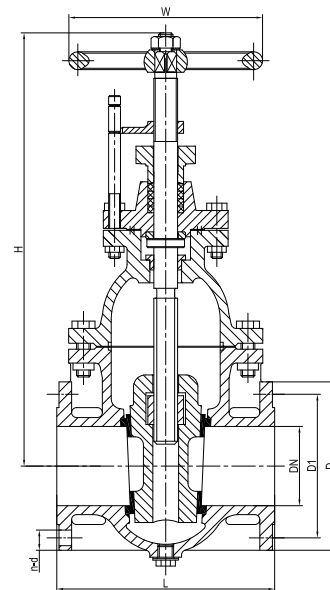
- Gearbox, electric or pneumatic actuations
- Larger dimensions on request

Pressure & Temperature Range

DN	Connection	Max.working pressure (bar)
40-150	PN16	Up to 120°C 16
200-300	PN10	10

Materials

Component	Material	Code
Body	Stainless steel	G-X6CrNiMo18-10 (1.4408)
Bonnet	Stainless steel	G-X6CrNiMo18-10 (1.4408)
Wedge	Stainless steel	G-X6CrNiMo18-10 (1.4408) +Deposited stellite
Stem	Stainless steel	X5CrNiMo18-10(1.4401)
Seat	Stainless steel	G-X6CrNiMo18-10 (1.4408)
Gland Packing	PTFE	-
Bonnet Gasket	NBR bonded aramid	-
Hand wheel	Cast Iron	EN-GJL-250 (GG25)



Dimensions

DN	L	D	D1	H	W	nxd	Weight(Kg)
40	140	150	110	270	140	4x18	15.0
50	150	165	125	270	140	4x18	17.0
65	170	185	145	295	160	4x18	20.0
80	180	200	160	325	160	8x18	27.0
100	190	220	180	360	200	8x18	34.0
125	200	250	210	450	200	8x18	50.0
150	210	285	240	500	200	8x22	60.0
200	230	340	295	620	250	8x22	100
250	250	395	350	730	315	12x22	165
300	270	445	400	860	315	12x22	220



Refer standards

Design Standard	DIN EN 1171 (DIN 3352 T2)
Face to face	EN558, Series 14 (DIN 3202 F4)
Flange connection	EN 1092-3 (DIN 2501)

Features

- Metal seated
- Non-Rising stem with open/close indicator and bolted bonnet

Options

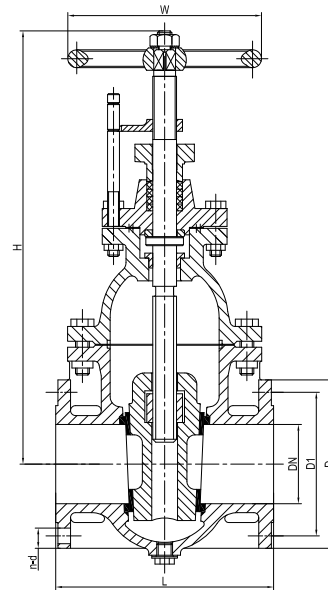
- With drain plug
- With actuator
- Other dimensions and materials on request

Pressure & Temperature Range

DN	Connection	Max.working pressure (bar) Up to 120°C
40-150	PN16	16
200	PN10	6
250	PN10	6
300	PN10	4

Materials

Component	Material	Code
Body	Bronze	CuSn5Zn5Pb5-C (CC491K)
Bonnet	Bronze	CuSn5Zn5Pb5-C (CC491K)
Stem	Special Brass	CuSn39Pb3(CW614N)
Seat	Bronze	CuSn5Zn5Pb5-C (CC491K)
Gland Packing	Graphite	-
Bonnet Gasket	SS+Graphite	-
Hand wheel	Cast Iron	EN-GJL-250 (GG25)



Dimensions

DN	L	D	D1	H	W	nxd	Weight(Kg)
40	140	150	110	280	120	4x19	9.0
50	150	165	125	280	120	4x19	10.0
65	170	185	145	330	160	4x19	18.0
80	180	200	160	360	200	8x19	22.0
100	190	220	180	410	200	8x19	29.0
125	200	250	210	450	200	8x19	39.0
150	210	285	240	530	200	8x23	49.0
200	230	340	295	630	200	8x23	79.0
250	250	395	350	720	250	12x23	108.0
300	270	445	400	820	315	12x23	187.0



Refer standards

Design Standard	DIN EN 1171 (DIN 3352 T2)
Face to face	EN558, Series 15 (DIN 3202 F4)
Flange connection	EN 1092 (DIN 2501)

Features

- Manually operated
- Metal seated
- Rising stem with open/close indicator and bolted bonnet

Options

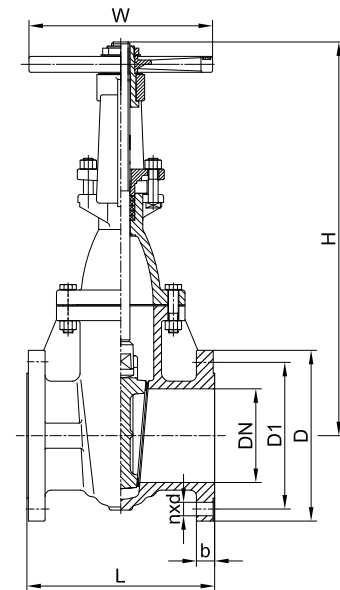
- With drain plug
- With actuator
- Other dimensions and materials on request

Pressure & Temperature Range

DN	Connection	Max.working pressure (bar)
40-300	PN16	Up to 120°C 16

Materials

Component	Material	Code
Body	Stainless steel	G-X6CrNiMo18-10 (1.4408)
Bonnet	Stainless steel	G-X6CrNiMo18-10 (1.4408)
Wedge	Stainless steel	G-X6CrNiMo18-10 (1.4408)+Deposited stellite
Stem	Stainless steel	X5CrNiMo18-10(1.4401)
Seat	Stainless steel	G-X6CrNiMo18-10 (1.4408)
Gland Packing	PTFE	-
Bonnet Gasket	NBR bonded aramid	-
Hand wheel	Cast Iron	EN-GJL-250 (GG25)



Dimensions

DN	L	D	D1	H	W	nxd	Weight(Kg)
15	115	95	65	190	120	4x14	4.2
20	120	105	75	195	120	4x14	4.8
25	125	115	85	234	120	4x14	5.7
32	130	140	100	297	200	4x18	9.5
40	140	150	110	300	200	4x18	10.2
50	150	165	125	330	200	4x18	12.5
65	170	185	145	393	200	4x18	16.6
80	180	200	160	470	250	8x18	23.5
100	190	220	180	545	250	8x18	30.2
125	200	250	210	640	300	8x18	46.6
150	210	285	240	740	300	8x22	56.2
200	230	340	295	910	350	12x22	72.6
250	250	405	355	1097	400	12x26	96.3
300	270	460	410	1285	400	12x26	185.5



Refer standards

Design Standard	DIN EN 1171 (DIN 3352 T2)
Face to face	EN558, Series 15 (DIN 3202 F5)
Flange connection	EN 1092-41 (DIN 2501)

Features

- Metal seated
- Rising stem with open/close indicator and bolted bonnet

Options

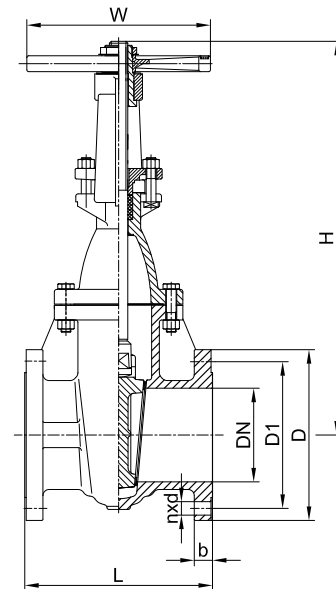
- With drain plug
- With actuator
- Other dimensions and materials on request

Pressure & Temperature Range

DN	Connection	Max.working pressure (bar)
40-300	PN16	Up to 120°C 16

Materials

Component	Material	Code
Body	Cast steel	GP240GH(GS-C25)
Bonnet	Cast steel	GP240GH(GS-C25)
Wedge	Cast steel	GP240GH(GS-C25) +Deposited stellite
Stem	Stainless steel	X5CrNi18-10(1.4301)
Seat	Stainless steel	X20Cr13(1.4021)
Gland Packing	Graphite	-
Bonnet Gasket	SS+Graphite	-
Hand wheel	Cast Iron	EN-GJL-250 (GG25)



Dimensions

DN	L	D	D1	H	W	nxd	Weight(Kg)
40	240	150	110	300	200	4x18	27.7
50	250	165	125	358	240	4x18	30.2
65	270	185	145	375	240	4x18	34.5
80	280	200	160	433	280	8x18	46.5
100	300	220	180	502	320	8x18	64.6
125	325	250	210	612	380	8x18	109.5
150	350	285	240	676	380	8x22	135.7
200	400	340	295	820	400	12x22	194.2
250	450	405	355	969	450	12x26	275.3
300	500	460	410	1142	580	12x26	381.5



Refer standards

Design Standard Manufacturer's standard

End Standard ISO 228-1:2003

Features

- Threaded connection
- Metal seal

Options

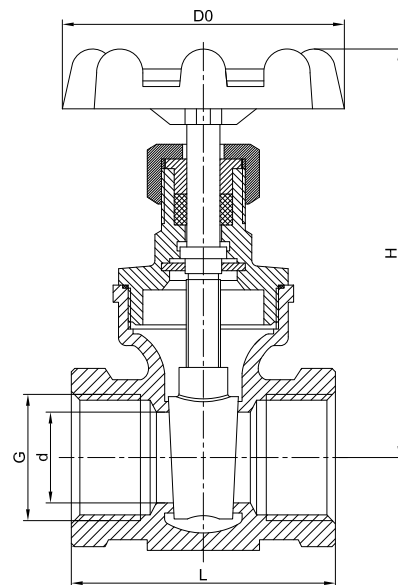
- Other dimension and materials on request

Pressure & Temperature Range

DN	Max.working pressure (bar)		
	up to 120°C	150°C	up to 225°C (steam up to 180°C)
15-65	16	10	6

Materials

Component	Material	Code
Body	Bronze	CuSn5Zn5Pb5-C
bonnet	Bronze	CuSn5Zn5Pb5-C
Wedge	Bronze	CuSn5Zn5Pb5-C
Stem	Brass	CW710R
Gasket	PTFE	-



Dimensions

DN	G (BSP)	L	H	d	D0	Weight(Kg)
15	G1/2"	55	101	15	70	0.45
20	G3/4"	60	108	20	70	0.55
25	G1"	65	115	25	80	0.75
32	G1 1/4"	75	132	32	80	1.2
40	G1 1/2"	85	149	40	90	1.8
50	G2"	95	175	50	100	2.5
65	G2 1/2"	116	213	65	140	6.0
80	G3"	130	241	80	140	9.0



Refer standards

Design Standard	BS 5352
End Standard	ISO 228-1:2003

Features

- Threaded connection
- Metal seal

Options

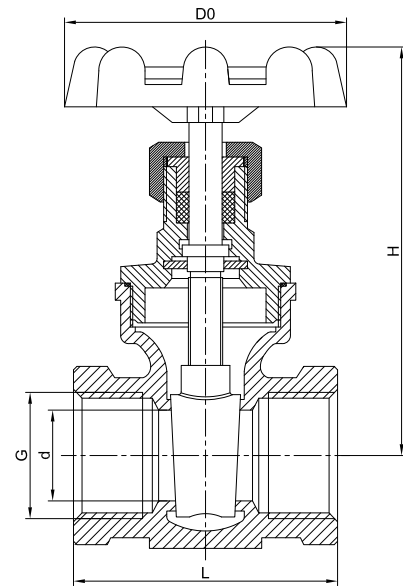
- Other dimension and materials on request

Pressure & Temperature Range

DN	Max.working pressure (bar)		
	up to 120°C	150°C	up to 225°C (steam up to 180°C)
15-65	16	10	6

Materials

Component	Material	Code
Body	Stainless steel	GX5CrNiMo19-11-2 (1.4408)
bonnet	Stainless steel	GX5CrNiMo19-11-2 (1.4408)
Wedge	Stainless steel	X5CrNiMo17-12-2 (1.4401)
Stem	Stainless steel	X5CrNiMo17-12-2 (1.4401)
Gasket	PTFE	-



Dimensions

DN	G (BSP)	L	H	d	D0	Weight(Kg)
15	G1/2"	55	101	15	70	0.4
20	G3/4"	60	108	20	70	0.5
25	G1"	65	115	25	80	0.7
32	G1 1/4"	75	132	32	80	1.0
40	G1 1/2"	85	149	40	90	1.5
50	G2"	95	175	50	100	2.1
65	G2 1/2"	116	213	65	140	5.6
80	G3"	130	241	80	140	8.6



Refer standards

Design Standard	DIN 3357
Face to face	EN558, Series 27 (DIN 3202 F4)
Flange connection	EN 1092-2 (DIN 2501)

Features

- Full Bore
- Floating Ball

Options

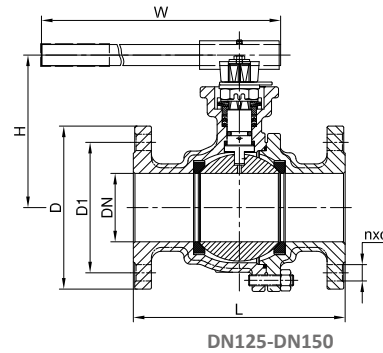
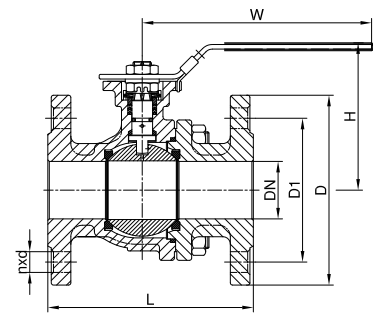
- Gearbox, electric or pneumatic actuators
- Carbon filled PTFE for steam applications

Pressure & Temperature Range

DN	Connection	Max.working pressure (bar)
15-150	PN16	Up to 150°C 16

Materials

Component	Material	Code
Body	Ductile Iron	EN-GJS-400-15 (GGG40)
Ball	Stainless steel	GX5CrNiMo19-11-2(1.4408)
Stem	Stainless Steel	X5CrNiMo17-12-2(1.4401)
Seat	PTFE	-



Dimensions

DN	Pressure rating	L	D	D1	nxd	H	W	Weight(Kg)
15	PN16	115	95	65	4X14	78	130	2.0
20	PN16	120	105	75	4X14	113	160	2.5
25	PN16	125	115	85	4X14	107	160	3.2
32	PN16	130	140	100	4X19	113	160	4.4
40	PN16	140	150	110	4X19	130	250	5.5
50	PN16	150	165	125	4X19	146	250	8.5
65	PN16	170	185	145	8X19	176	350	11.5
80	PN16	180	200	160	8X19	222	350	15.5
100	PN16	190	220	190	8X23	222	400	20
125	PN16	325	250	220	8X28	257	750	45
150	PN16	350	285	250	8X28	275	850	65



Refer standards

Design Standard	DIN 3357
Face to face	EN558, Series 27
Flange connection	DIN 3202 F4/F5
	EN 1092-1 (DIN 2501)

Features

- Full Bore
- Floating Ball
- Anti-Static Device

Options

- Gearbox, electric or pneumatic actuations
- Carbon filled PTFE for steam applications

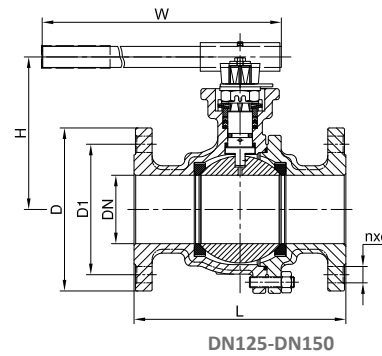
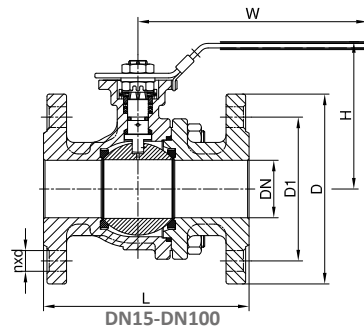
Pressure & Temperature Range

DN	Connection	Max.working pressure (bar)
15-50	PN40	40
65-150	PN16	16

Up to 150°C

Materials

Component	Material	Code
Body	Cast Steel	GP240GH(1.0619)
Ball	Stainless steel	GX5CrNiMo19-11-2(1.4408)
Stem	Stainless steel	X5CrNiMo17-12-2(1.4401)
Seat	PTFE	-



Dimensions

DN	Pressure rating	L	D	D1	nxd	H	W	Weight(Kg)
15	PN40	115	95	65	4X14	80	132	2.1
20	PN40	120	105	75	4X14	84.5	132	2.8
25	PN40	125	115	85	4X14	102	166	3.6
32	PN40	130	140	100	4X18	105	166	4.7
40	PN40	140	150	110	4X18	125	198	6.2
50	PN40	150	165	125	4X18	132	198	11
65	PN16	170	185	145	8X18	178	300	15
80	PN16	180	200	160	8X18	188	300	19
100	PN16	190	220	180	8X18	202	450	24
125	PN16	325	250	210	8X18	233	600	57
150	PN16	350	285	240	8X22	259	800	72



Refer standards

Design Standard	DIN 3357
Face to face	EN558, Series 27 DIN 3202 F4
Flange connection	EN 1092-1 (DIN 2501)

Features

- Full Bore
- Floating Ball
- Anti-Static Device

Options

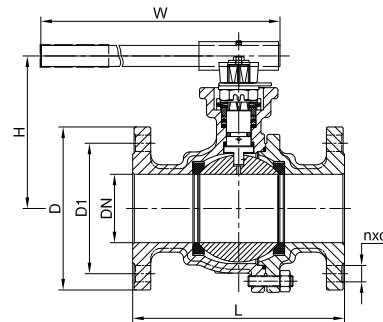
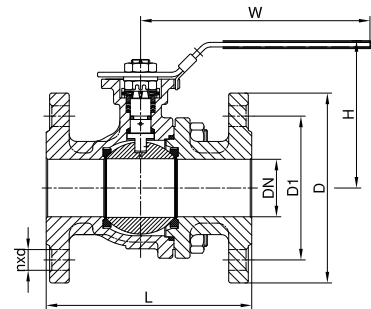
- Gearbox, electric or pneumatic actuators
- Carbon filled PTFE for steam applications

Pressure & Temperature Range

DN	Connection	Max.working pressure (bar)
15-50	PN40	40 Up to 150°C
65-150	PN16	16

Materials

Component	Material	Code
Body	Stainless steel	GX5CrNiMo19-11-2(1.4408)
Ball	Stainless steel	X5CrNiMo17-12-2(1.4401)
Stem	Stainless steel	X5CrNiMo17-12-2(1.4401)
Seat	PTFE	-



DN125-DN150

Dimensions

DN	Pressure rating	L	D	D1	nxd	H	W	Weight(Kg)
15	PN40	115	95	65	4X14	80	132	2.1
20	PN40	120	105	75	4X14	84.5	132	2.8
25	PN40	125	115	85	4X14	102	166	3.6
32	PN40	130	140	100	4X18	105	166	4.7
40	PN40	140	150	110	4X18	125	198	6.2
50	PN40	150	165	125	4X18	132	198	11
65	PN16	170	185	145	8X18	178	300	15
80	PN16	180	200	160	8X18	188	300	19
100	PN16	190	220	180	8X18	202	450	24
125	PN16	325	250	210	8X18	233	600	57
150	PN16	350	285	240	8X22	259	800	72



Refer standards

Design Standard	DIN 3357
Face to face	EN558, Series 27 DIN 3202 F4
Flange connection	EN 1092-1 (DIN 2501)

Features

- Full Bore
- Floating Ball
- Anti-Static Device

Options

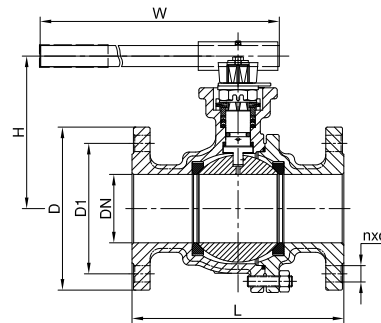
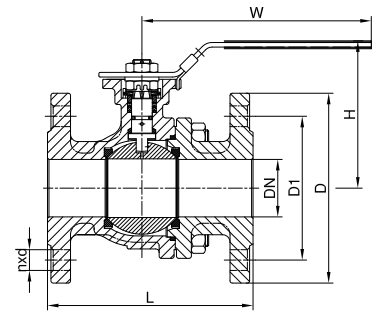
- Gearbox, electric or pneumatic actuations
- Carbon filled PTFE for steam applications

Pressure & Temperature Range

DN	Connection	Max.working pressure (bar)
15-150	PN16	Up to 150°C 16

Materials

Component	Material	Code
Body	Suplex Stainless Steel	GX2CrNiMoN22-5-3(1.4470)
Ball	Suplex Stainless Steel	GX2CrNiMoN22-5-3(1.4470)
Stem	Suplex Stainless Steel	X2CrNiMoN22-5-3(1.4462)
Seat	PTFE	-



DN125-DN150

Dimensions

DN	Pressure rating	L	D	D1	nxd	H	W	Weight(Kg)
15	PN16	115	95	65	4X14	80	132	2.1
20	PN16	120	105	75	4X14	84.5	132	2.8
25	PN16	125	115	85	4X14	102	166	3.6
32	PN16	130	140	100	4X18	105	166	4.7
40	PN16	140	150	110	4X18	125	198	6.2
50	PN16	150	165	125	4X18	132	198	11
65	PN16	170	185	145	8X18	178	300	15
80	PN16	180	200	160	8X18	188	300	19
100	PN16	190	220	180	8X18	202	450	24
125	PN16	325	250	210	8X18	233	600	57
150	PN16	350	285	240	8X22	259	800	72



Refer standards

Design Standard	DIN 3357
Face to face	EN558, Series 27
Flange connection	DIN 3202 F4 EN 1092-3 (DIN 2501)

Features

- Full Bore
- Floating Ball
- Anti-Static Device

Options

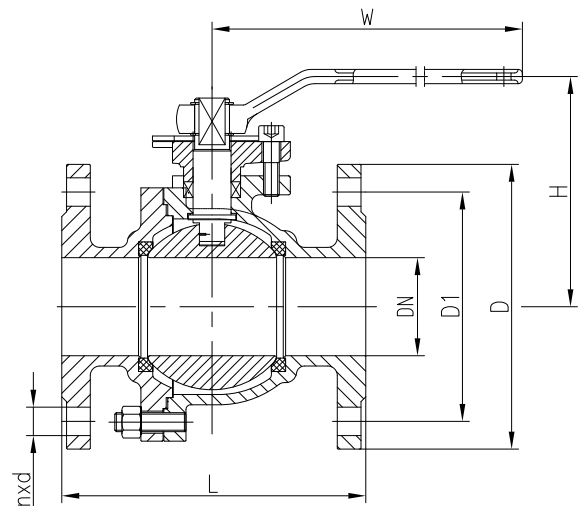
- Gearbox, electric or pneumatic actuations
- Carbon filled PTFE for steam applications

Pressure & Temperature Range

DN	Connection	Max.working pressure (bar)
15-150	PN16	Up to 150°C 16

Materials

Component	Material	Code
Body	Bronze	CuSn5Zn5Pb5-C (CC491K)
Ball	Bronze	CuZn40Pb2 (CW617N)
Stem	Bronze	CuZn40Pb2 (CW617N)
Seat	PTFE	-



Dimensions

DN	Pressure rating	L	D	D1	nxd	H	W	Weight(Kg)
15	PN16	115	95	65	4X14	59	130	2.2
20	PN16	120	105	75	4X14	63	130	2.8
25	PN16	125	115	85	4X14	75	160	3.6
32	PN16	130	140	100	4X18	85	180	4.7
40	PN16	140	150	110	4X18	95	230	6.5
50	PN16	150	165	125	4X18	107	230	10.5
65	PN16	170	185	145	8X18	142	400	14.8
80	PN16	180	200	160	8X18	152	400	17
100	PN16	190	220	180	8X18	178	650	22
125	PN16	325	250	210	8X18	252	1050	55
150	PN16	350	285	240	8X22	272	1050	71



Refer standards

Design Standard	DIN 3357
Face to face	Manufacturers Standard
Pipe thread connection:	ISO 228-1

Features

- Full Bore
- Floating Ball
- Anti-Static Device

Options

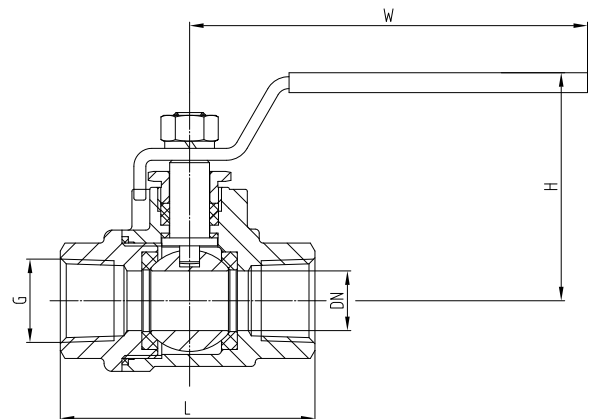
- NPT thread.
- Other materials on request.

Pressure & Temperature Range

DN	Connection	Max.working pressure (bar)
8-50	PN16	16 Up to 150°C

Materials

Component	Material	Code
Body	Stainless Steel	GX5CrNiMo19-11-2 (1.4408)
Ball	Stainless Steel	GX5CrNiMo19-11-2 (1.4408)
Stem	Stainless Steel	X5CrNiMo17-12-2 (1.4401)
Seat	PTFE	-



Dimensions

DN	Pressure rating	L	G	H	W	Weight(Kg)
8	PN16	46.6	1/4"	50	75	0.3
10	PN16	46.6	3/8"	50	75	0.3
15	PN16	56.3	1/2"	56.5	95	0.3
20	PN16	61.5	3/4"	60.5	95	0.5
25	PN16	75.5	1"	68.8	120	0.8
32	PN16	85.8	1-1/4"	75	120	1.2
40	PN16	94.8	1-1/2"	83.5	150	1.8
50	PN16	114.2	2"	95	150	2.8



Refer standards

Design Standard	DIN 3357
Face to face	Manufacturers Standard
Pipe thread connection:	ISO 228-1

Features

- Full Bore
- Floating Ball
- Anti-Static Device

Options

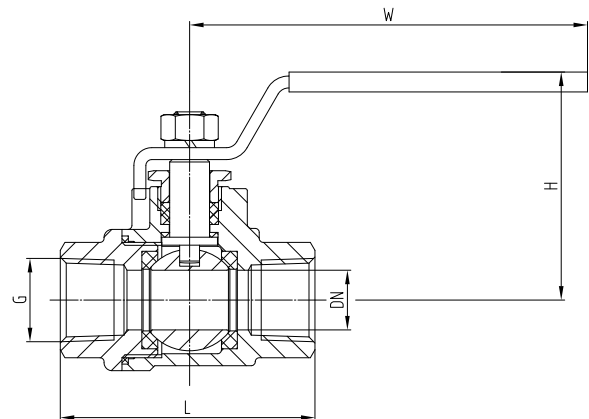
- NPT thread.
- Other materials on request.

Pressure & Temperature Range

DN	Connection	Max.working pressure (bar)
8-50	PN16	Up to 150°C 16

Materials

Component	Material	Code
Body	Bronze	CuSn5Zn5Pb5-C (CC491K)
Ball	Bronze	CuZn40Pb2 (CW617N)
Stem	Bronze	CuZn40Pb2 (CW617N)
Seat	PTFE	-



Dimensions

DN	Pressure rating	L	G	H	W	Weight(Kg)
8	PN16	46.6	1/4"	50	75	0.3
10	PN16	46.6	3/8"	50	75	0.3
15	PN16	56.3	1/2"	56.5	95	0.3
20	PN16	61.5	3/4"	60.5	95	0.5
25	PN16	75.5	1"	68.8	120	0.8
32	PN16	85.8	1-1/4"	75	120	1.2
40	PN16	94.8	1-1/2"	83.5	150	1.8
50	PN16	114.2	2"	95	150	2.8



Refer standards

Face to Face Std:	DIN 3202-F1
Flange Connection	EN 1902-2 (DIN2501)

Features

- Large filtering area in effective and pressure loss is low.
- Easily assembled/disassembled, easy to clean and maintain

Options

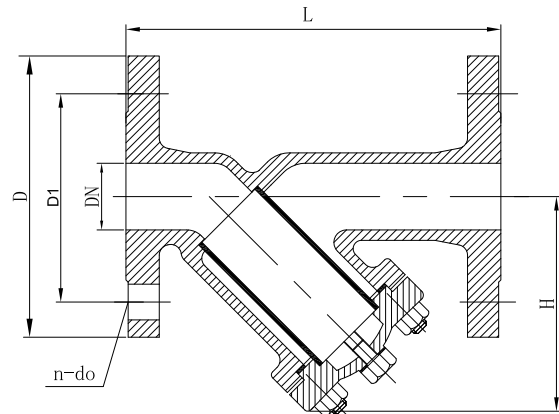
- Other dimension and materials on request

Pressure & Temperature Range

DN	Connection	Max.working pressure (bar)	
		Up to 120°C	
15-150	PN16	16	
200-500	PN10	10	

Materials

Component	Material	Code
Body	Nodular Cast iron	EN-GJL-400-15 (GGG40)
bonnet	Nodular Cast iron	EN-GJL-400-15 (GGG40)
Filter	Stainless Steel	X5CrNi18-10 (1.4301)
Gasket	Aramid fiber	PTFE
Bolt/Nut	Stainless Steel	X5CrNi18-10 (1.4301)



Dimensions

DN	L	H	D	D1	n	d0	Weight(Kg)
15	130	90	95	65	4	14	3.0
20	150	90	105	75	4	14	3.5
25	160	95	115	85	4	14	4.5
32	180	100	140	100	4	14	5.5
40	200	115	150	110	4	14	8.0
50	230	140	165	125	4	14	10
65	290	160	185	145	4	18	15
80	310	200	200	160	8	18	22
100	350	240	220	180	8	18	32
125	400	280	250	210	8	18	43
150	480	300	285	240	8	22	60
200	600	370	340	295	8	22	90
250	730	440	395	350	12	22	155
300	850	525	445	400	12	22	180
350	980	590	505	460	16	22	250
400	1100	680	565	515	16	26	320
500	1250	980	670	620	20	26	430



Refer standards

Face to Face Std:	DIN 3202-F1
Flange Connection	EN 1902-3 (DIN2501)

Features

- Large filtering area in effective and pressure loss is low.
- Easily assembled/disassembled, easy to clean and maintain

Options

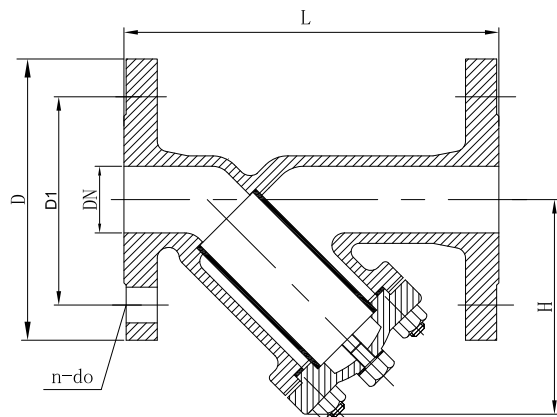
- Other dimension and materials on request

Pressure & Temperature Range

DN	Connection	Max.working pressure (bar) Up to 120°C
15-150	PN16	16

Materials

Component	Material	Code
Body	Bronze	CuSn5Zn5Pb5-C
bonnet	Bronze	CuSn5Zn5Pb5-C
Filter	Stainless Steel	X5CrNi18-10 (1.4301)
Gasket	Aramid fiber	PTFE
Bolt/Nut	Stainless Steel	X5CrNi18-10 (1.4301)



Dimensions

DN	L	H	D	D1	n	d0	Weight(Kg)
15	130	90	95	65	4	14	2.8
20	150	90	105	75	4	14	3.2
25	160	95	115	85	4	14	4.1
32	180	100	140	100	4	14	5.2
40	200	115	150	110	4	14	7.9
50	230	140	165	125	4	14	9.1
65	290	160	185	145	4	18	14
80	310	200	200	160	8	18	20.8
100	350	240	220	180	8	18	30.2
125	400	280	250	210	8	18	40.5
150	480	300	285	240	8	22	58



Refer standards

Design Standard	Manufacturer's standard
Face to face	Manufacturer's standard
Flange connection	EN 1092-1 (DIN 2501)

Features

- Flange connection
- Pressure resistance, temperature resistance, fatigue resistance

Options

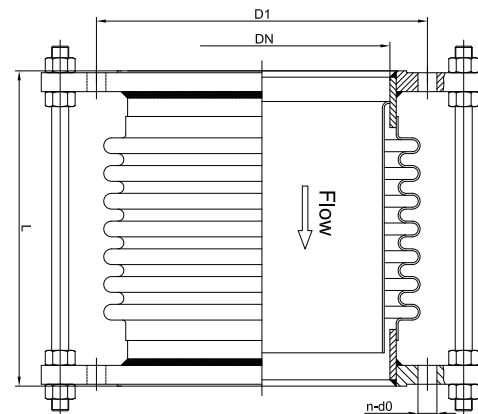
- Other dimension and materials on request

Pressure & Temperature Range

DN	Connection	Max.working pressure (bar)
		-40°C to +225°C
DN32-DN150	PN16	16
DN200-DN500	PN10	10

Materials

Component	Material	Code
Body	Stainless steel	X5CrNiMo17-12-2 (1.4401)
Flange	Stainless Steel	X5CrNi18-10 (1.4301)



Dimensions

DN	L	D	D1	n	d0	Weight(Kg)
40	180	150	110	4	18	6
50	180	165	125	4	18	7
65	200	185	145	4	18	8.5
80	200	200	160	8	18	10
100	200	220	180	8	18	12
125	225	250	210	8	18	14
150	225	285	240	8	22	18
200	265	340	295	8	22	30
250	270	395	350	12	22	40
300	280	445	400	12	22	51
350	290	505	460	16	22	75
400	310	565	515	16	22	96
500	330	670	620	20	26	168



Refer standards

Design Standard	Manufacturer's standard
Face to face	Manufacturer's standard
Flange connection	EN 1092-1 (DIN 2501)

Features

- Small in size
- light in weight
- flexible and easy to install and maintain.

Options

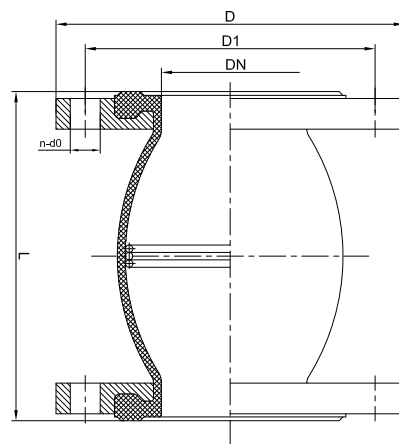
- Other dimension and materials on request

Pressure & Temperature Range

DN	Connection	Max.working pressure (bar)
		-10°C to +80°C
DN32-DN150	PN16	16
DN200-DN300	PN10	10

Materials

Component	Material	Code
Body	NBR/EPDM	-
Flange	Stainless Steel	X5CrNi18-10 (1.4301)



Dimensions

DN	L	D	D1	n	d0	Weight(Kg)
32	100	140	100	4	18	4
40	100	150	110	4	18	5
50	110	165	125	4	18	7
65	130	185	145	4	18	8
80	160	200	160	8	18	10
100	180	220	180	8	18	12
125	200	250	210	8	18	15
150	200	285	240	8	22	18
200	260	340	295	8	22	28
250	320	395	350	12	22	48
300	320	445	400	12	22	55

Duplex Chain Oil Strainer

Thread connection, Cast Iron

Product Number: S806



Refer standards

Design Standard	Manufacturer's standard
Face to face Standard	DIN 3202
Flange Standard	EN 1092-2 (DIN 2501)

Features

- Double Stainless steel strainer

Options

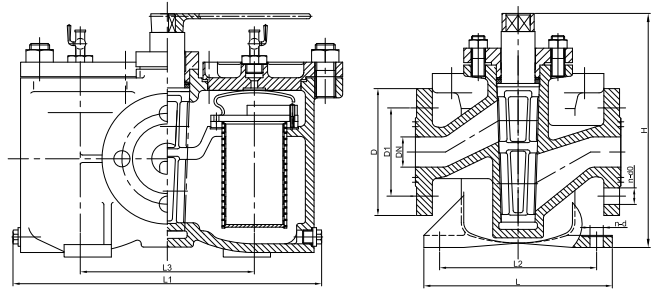
- Other dimension and materials on request

Pressure & Temperature Range

DN	Connection	Max.working pressure (bar)
20-100	PN4	Up to 120°C 4

Materials

Component	Material	Code
Body	Cast iron	EN-GJL-250 (GG25)
Bonnet	Cast iron	EN-GJL-250 (GG25)
Core plug	bronze	ZQA195-2
Screen	Stainless steel	X5CrNiMo17-12-2 (1.4401)



Dimensions

DN	Structure dimension			Flange				Footing				Weight (Kg)
	H	L1	L	D	D1	n	d0	L2	L3	n	d	
20	218	223	145	90	65	4	11	115	125	4	11	10.8
25	237	252	170	100	75	4	11	130	140	4	11	12.8
32	265	292	195	120	90	4	11	145	165	4	11	16.9
40	298	340	210	130	100	4	14	165	195	4	13	24.2
50	340	398	235	140	110	4	14	190	230	4	13	34.2
65	395	482	272	160	130	4	14	225	280	4	15	42.6
80	445	560	306	190	150	4	18	260	335	4	15	76.7
100	535	665	346	210	170	4	18	300	380	4	15	126



Refer standards

Design Standard Manufacturer's standard

Flange connection EN 1092-3 (DIN 2501)

Features

- Check valve for suction purpose
- Equipped with a strainer and mounted in the end of a pipe

Options

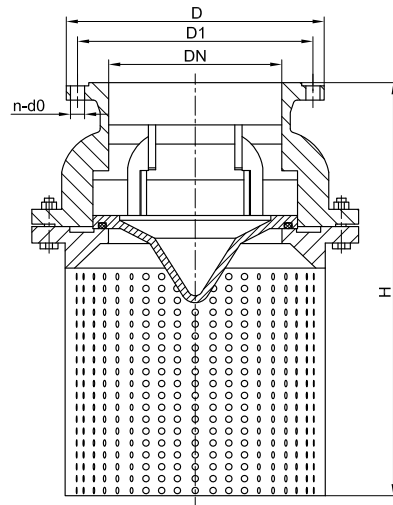
- Other dimension and materials on request

Pressure & Temperature Range

DN	Connection	Max.working pressure (bar)
40-150	PN16	16 Up to 90°C
200-300	PN10	10

Materials

Component	Material	Code
Body	Bronze	CuSn5Zn5Pb5-C
Disc	Bronze	CuSn5Zn5Pb5-C
Disc Ring	EPDM	-
bonnet	Bronze	CuSn5Zn5Pb5-C
Basket	Stainless steel	X5CrNiMo17-12-2 (1.4401)



Dimensions

DN	H	D	D1	n	d0	Weight(Kg)
40	230	150	110	4	18	6.5
50	230	165	125	4	18	7.2
65	280	185	145	4	18	9.1
80	300	200	160	8	18	13
100	315	220	180	8	18	20
125	400	250	210	8	18	24
150	505	285	240	8	22	41
200	530	340	295	8	22	68
250	620	395	350	12	22	95
300	700	445	400	12	22	151



Refer standards

Design Standard	Manufacturer's standard
Flange connection	EN 1092-2 (DIN 2501)

Features

- Check valve for suction purpose
- Equipped with a strainer and mounted in the end of a pipe

Options

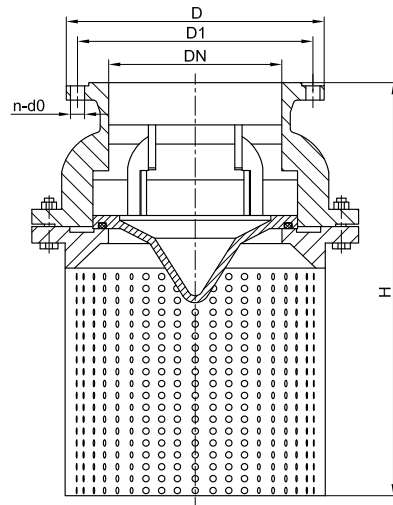
- Other dimension and materials on request

Pressure & Temperature Range

DN	Connection	Max.working pressure (bar)
		Up to 90°C
40-150	PN16	16
200-300	PN10	10

Materials

Component	Material	Code
Body	Cast iron	EN-GJL-250 (GG25)
Disc	Cast iron	EN-GJL-250 (GG25)
Disc Ring	EPDM	-
bonnet	Cast iron	EN-GJL-250 (GG25)
Basket	Stainless steel	X5CrNi18-10 (1.4301) (AISI 304)



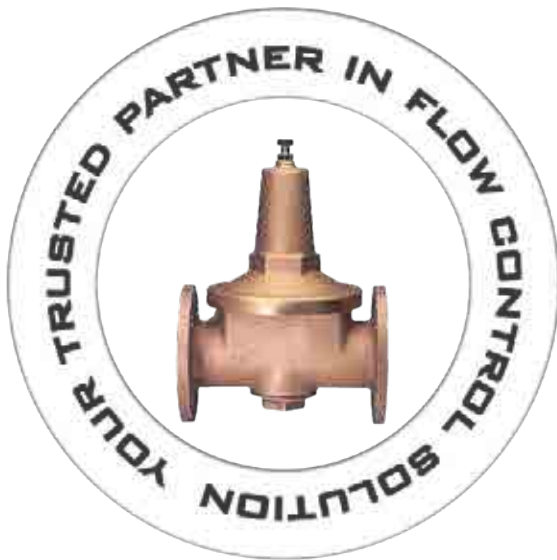
Dimensions

DN	H	D	D1	n	d0	Weight (Kg)
40	230	150	110	4	18	7
50	230	165	125	4	18	8
65	280	185	145	4	18	10
80	300	200	160	8	18	14
100	315	220	180	8	18	21
125	400	250	210	8	18	26
150	505	285	240	8	22	44
200	530	340	295	8	22	72
250	620	395	350	12	22	100
300	700	445	400	12	22	160

Pressure Reducing Valve

DIN flanges, Bronze

Product Number: S293



Refer standards

Design Standard	Manufacturer's standard
Flange connection	EN 1092-3 (DIN 2501)
Outlet pressure range:	1.5 to 8 bars
Highest reduction ratio	10:1

Features

- Direct spring loaded
- Metal Seated

Options

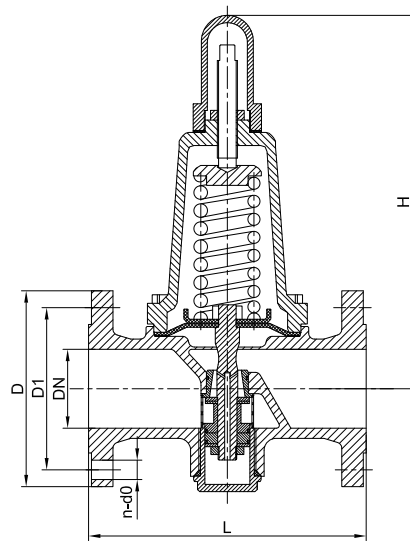
- Other dimension and materials on request

Pressure & Temperature Range

DN	Connection	Max.working pressure (bar)
15-50	PN25	Up to 90°C 25

Materials

Component	Material	Code
Body	Bronze	CuSn5Zn5Pb5-C
Bonnet(DN15-50)	Brass	CW614N
Membrane	Reinforced CR	-
Sealing	NBR	-
Spring	Spring steel SH	-



Dimensions

DN	Pressure rating	L	D	D1	H	n	d0	Weight(Kg)
15	PN25	130	95	65	120	4	14	3.1
20	PN25	150	105	75	120	4	14	3.7
25	PN25	160	115	85	155	4	14	5.1
32	PN25	180	140	100	200	4	18	8.5
40	PN25	200	150	110	200	4	18	9.5
50	PN25	230	165	125	260	4	18	12.5



Pressure & Temperature Range

DN	Connection	Max.working pressure (bar)
50-300	PN10	Up to 200°C 10

Materials

Component	Material	Code
Body	Nodlar Cast Iron	EN-GJL-400-15 (GGG40)
bonnet	Nodlar Cast Iron	EN-GJL-400-15 (GGG40)
Screen	Stainless Steel	X5CrNi18-10 (1.4301)
Screen Clip	Stainless Steel	X2CrNiMo17-12-2(1.4404)
Float	Stainless Steel	X2CrNiMo17-12-2(1.4404)
Seal Ring	NBR	-

Refer standards

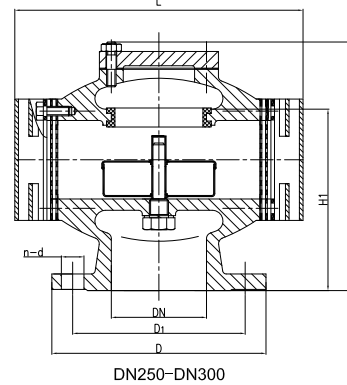
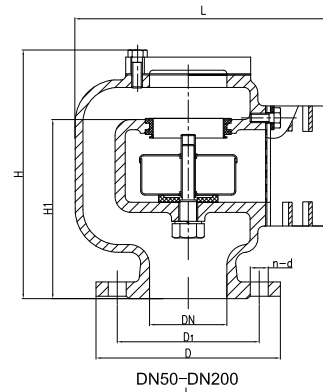
Design Standard	Manufacturer's standard
Flange connection	EN 1092-2 (DIN 2501)

Features

- For cargo tank and oil tank

Options

- Other dimension and materials on request



Dimensions

DN	L	H	H1	D	D1	n	d	Weight(Kg)
50	165	180	120	165	125	4	18	6.2
65	195	205	140	185	145	4	18	9.2
80	233	245	160	200	160	8	18	20
100	265	270	180	220	180	8	18	26.5
125	320	310	205	250	210	8	18	31
150	380	350	225	285	240	8	22	37
200	495	455	290	340	295	8	22	63.5
250	510	450	307	395	350	12	22	93
300	655	525	382	445	400	12	22	112



Refer standards

Design Standard	Manufacturer's standard
Face to face	DIN 3202-F1
Flange connection	EN 1092-2 (DIN 2501)

Features

- Oil/fuel tank emergency shut-off valve, operated locally or remotely & self-closing valves counter weight or spring closing.
- Manual, pneumatic, control off

Options

- Impuls unit for remote control
- Other dimension and materials on request

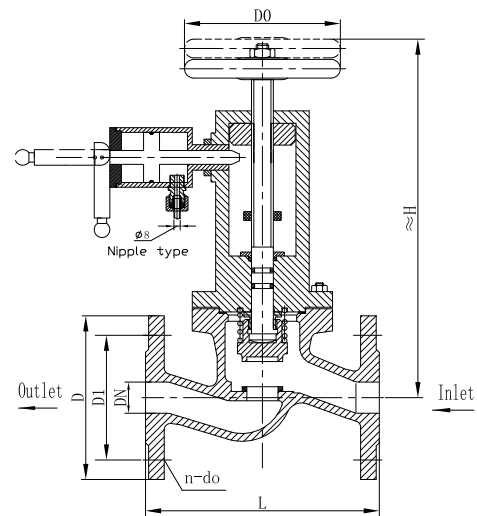
Pressure & Temperature Range

DN	Connection	Max.working pressure (bar)
DN15-DN150	PN16	16
DN15-DN150	PN10	10

-10°C to +150°C

Materials

Component	Material	Code
Body	Nodular Cast iron	GGG40
bonnet	Nodular Cast iron	GGG40
Disc	Stainless Steel	X20Cr13
Stem	Stainless Steel	X20Cr13
Seat	Stainless Steel	X5CrNi18-10 (1.4301)
Spring	Spring steel	X10CrNi18-8 (1.4310)
Cylinder	Brass	CuZn39Pb3



Dimensions

DN	L	H	D	D1	D0	n	d0	Weight(Kg)
15	130	237	95	65	80	4	14	6.0
20	150	240	105	75	80	4	14	7.5
25	160	242	115	85	100	4	14	8.4
32	180	245	140	100	140	4	18	10
40	200	274	150	110	140	4	18	13
50	230	283	165	125	140	4	18	15.7
65	290	325	185	145	140	4	18	22.7
80	310	350	200	160	180	8	18	27
100	350	375	220	180	180	8	18	40
125	400	400	250	210	200	8	18	47.5
150	480	430	285	240	225	8	22	61



Refer standards

Design Standard	Manufacturer's standard
Face to face	DIN 3202-F1
Flange connection	EN 1092-3 (DIN 2501)

Features

- Oil/fuel tank emergency shut-off valve, operated locally or remotely & self-closing valves counter weight or spring closing.
- Manual, pneumatic, control off

Options

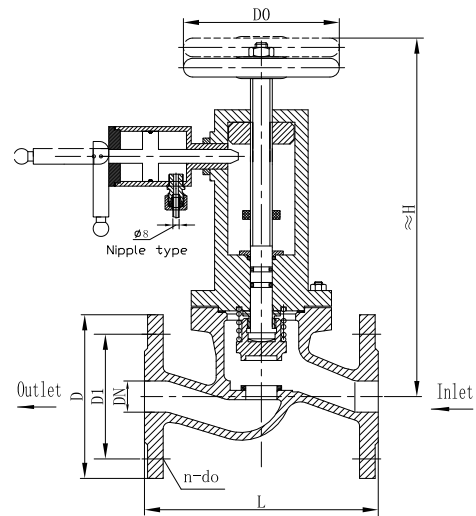
- Impuls unit for remote control
- Other dimension and materials on request

Pressure & Temperature Range

DN	Connection	Max.working pressure (bar)	
		-10°C to +150°C	
DN15-DN150	PN16	16	
DN15-DN150	PN10	10	

Materials

Component	Material	Code
Body	Bronze	CuSn5Zn5Pb5-C
bonnet	Bronze	CuSn5Zn5Pb5-C
Disc	Bronze	CuSn5Zn5Pb5-C
Stem	Brass	CuZn40Pb
Seat	Bronze	CuSn5Zn5Pb5-C
Spring	Spring steel	X10CrNi18-8 (1.4310)
Cylinder	Brass	CuZn39Pb3



Dimensions

DN	L	H	D	D1	D0	n	d0	Weight(Kg)
15	130	237	95	65	80	4	14	5.5
20	150	240	105	75	80	4	14	7.0
25	160	242	115	85	100	4	14	7.9
32	180	245	140	100	140	4	18	8.5
40	200	274	150	110	140	4	18	11.8
50	230	283	165	125	140	4	18	14.5
65	290	325	185	145	140	4	18	21.5
80	310	350	200	160	180	8	18	25.6
100	350	375	220	180	180	8	18	38.5
125	400	400	250	210	200	8	18	45.5
150	480	430	285	240	225	8	22	58.5



Refer standards

Design Standard	Manufacturer's standard
Face to face	DIN 3202-F1
Flange connection	EN 1092-2 (DIN 2501)

Features

- Oil/fuel tank emergency shut-off valve, operated locally or remotely & self-closing valves counter weight or spring closing.
- Manual, pneumatic, control off

Options

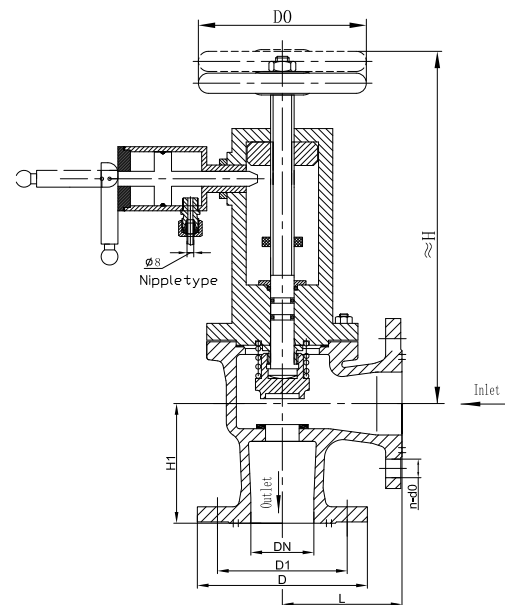
- Impuls unit for remote control
- Other dimension and materials on request

Pressure & Temperature Range

DN	Connection	Max.working pressure (bar)
DN15-DN150	PN16	-10°C to +150°C 16
DN15-DN150	PN10	10

Materials

Component	Material	Code
Body	Nodular Cast iron	GGG40
bonnet	Nodular Cast iron	GGG40
Disc	Stainless Steel	X20Cr13
Stem	Stainless Steel	X20Cr13
Seat	Stainless Steel	X5CrNi18-10 (1.4301)
Spring	Spring steel	X10CrNi18-8 (1.4310)
Cylinder	Brass	CuZn39Pb3



Dimensions

DN	L	H1	H	D	D1	D0	n	d0	Weight(Kg)
15	90	90	320	95	65	80	4	14	7.0
20	95	95	320	105	75	80	4	14	8.0
25	100	100	325	115	85	100	4	14	8.8
32	105	105	330	140	100	140	4	18	9.8
40	115	115	365	150	110	140	4	18	12.6
50	125	125	381	165	125	140	4	18	16.7
65	145	145	437	185	145	140	4	18	20.7
80	155	155	466	200	160	180	8	18	26
100	175	175	500	220	180	180	8	18	36
125	200	200	540	250	210	200	8	18	43.5
150	225	225	580	285	240	225	8	22	52



Refer standards

Design Standard	Manufacturer's standard
Face to face	DIN 3202-F1
Flange connection	EN 1092-3 (DIN 2501)

Features

- Oil/fuel tank emergency shut-off valve, operated locally or remotely & self-closing valves counter weight or spring closing.
- Manual, pneumatic, control off

Options

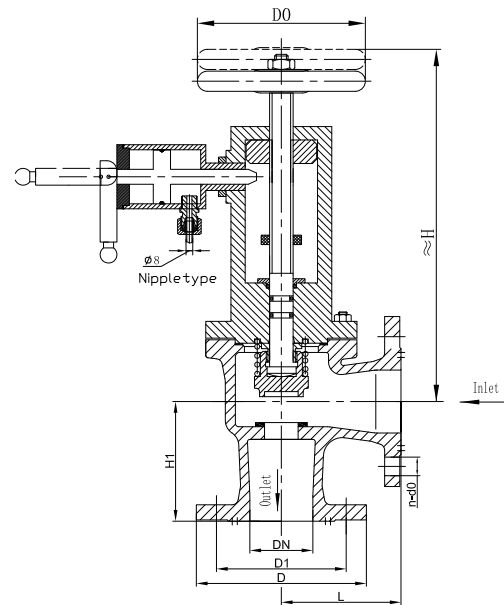
- Impuls unit for remote control
- Other dimension and materials on request

Pressure & Temperature Range

DN	Connection	Max.working pressure (bar)
DN15-DN150	PN16	-10°C to +150°C
DN15-DN150	PN10	10

Materials

Component	Material	Code
Body	Bronze	CuSn5Zn5Pb5-C
bonnet	Bronze	CuSn5Zn5Pb5-C
Disc	Bronze	CuSn5Zn5Pb5-C
Stem	Brass	CuZn40Pb
Seat	Bronze	CuSn5Zn5Pb5-C
Spring	Spring steel	X10CrNi18-8 (1.4310)
Cylinder	Brass	CuZn39Pb3



Dimensions

DN	L	H1	H	D	D1	D0	n	d0	Weight(Kg)
15	90	90	320	95	65	80	4	14	6.5
20	95	95	320	105	75	80	4	14	7.2
25	100	100	325	115	85	100	4	14	8.0
32	105	105	330	140	100	140	4	18	8.8
40	115	115	365	150	110	140	4	18	11.2
50	125	125	381	165	125	140	4	18	15.0
65	145	145	437	185	145	140	4	18	18.5
80	155	155	466	200	160	180	8	18	23.5
100	175	175	500	220	180	180	8	18	32.5
125	200	200	540	250	210	200	8	18	39
150	225	225	580	285	240	225	8	22	47.5



Refer standards

Design Standard	Manufacturer's standard
Flange Standard	EN 1092-1 (DIN 2501)
Flanges Drilled	PN10 (DN 40-DN500)

Features

- Welded structure

Options

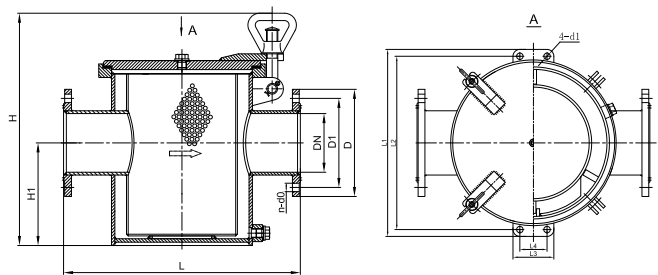
- Other dimension and materials on request

Pressure & Temperature Range

DN	Connection	Max.working pressure (bar)
DN40-DN500	PN10	-10°C to +120°C
		6

Materials

Component	Material	Code
Body	Steel	S235JR (Q235A)
Bonnet	Steel	S235JR (Q235A)
Screen	Stainless steel	X5CrNiMo17-12-2 (1.4401)



Dimensions

DN	Structure size			Flange dimensions				Installation dimensions					Weight (Kg)
	L	H	H1	D	D1	n	d0	L1	L2	L3	L4	d1	
40	270	255	92	150	110	4	18	-	-	-	-	-	13
50	270	255	92	165	125	4	18	-	-	-	-	-	13.2
65	310	325	122	185	145	4	18	-	-	-	-	-	17.4
80	350	360	152	200	160	8	18	-	-	-	-	-	21.7
100	420	415	182	220	180	8	18	-	-	-	-	-	38.4
125	420	445	182	250	210	8	18	-	-	-	-	-	43.4
150	490	470	190	285	240	8	22	-	-	-	-	-	62.1
200	540	550	240	340	295	8	22	440	410	80	50	17	95.7
250	600	675	315	395	350	12	22	520	490	80	50	17	146
300	660	770	340	445	400	12	22	590	560	100	70	17	186
350	850	963	508	505	460	16	22	680	640	120	80	19	376
400	950	995	515	565	515	16	22	770	730	120	80	19	514
450	1050	1040	550	615	565	20	20	880	830	140	90	23	648
500	1180	1120	630	670	620	20	26	980	930	160	110	23	774



Pressure & Temperature Range

DN	Connection	Max.working pressure (bar)
DN40-DN500	PN10	-10°C to +120°C

Materials

Component	Material	Code
Body	Steel	S235JR (Q235A)
Bonnet	Steel	S235JR (Q235A)
Screen	Stainless steel	X5CrNiMo17-12-2 (1.4401)

Dimensions

DN	Structure size			Flange dimensions				Installation dimensions					Weight (Kg)
	L	H	H1	D	D1	n	d0	L1	L2	L3	L4	d1	
40	135	255	92	150	110	4	18	-	-	-	-	-	13
50	135	255	92	165	125	4	18	-	-	-	-	-	13.2
65	155	325	122	185	145	4	18	-	-	-	-	-	17.4
80	175	360	152	200	160	8	18	-	-	-	-	-	21.7
100	210	415	182	220	180	8	18	-	-	-	-	-	38.4
125	210	445	182	250	210	8	18	-	-	-	-	-	43.4
150	245	470	190	285	240	8	22	-	-	-	-	-	62.1
200	270	550	240	340	295	8	22	440	410	80	50	17	95.7
250	300	675	315	395	350	12	22	520	490	80	50	17	146
300	330	770	340	445	400	12	22	590	560	100	70	17	186
350	425	963	508	505	460	16	22	680	640	120	80	19	376
400	475	995	515	565	515	16	22	770	730	120	80	19	514
450	525	1040	550	615	565	20	20	880	830	140	90	23	648
500	590	1120	630	670	620	20	26	980	930	160	110	23	774

Refer standards

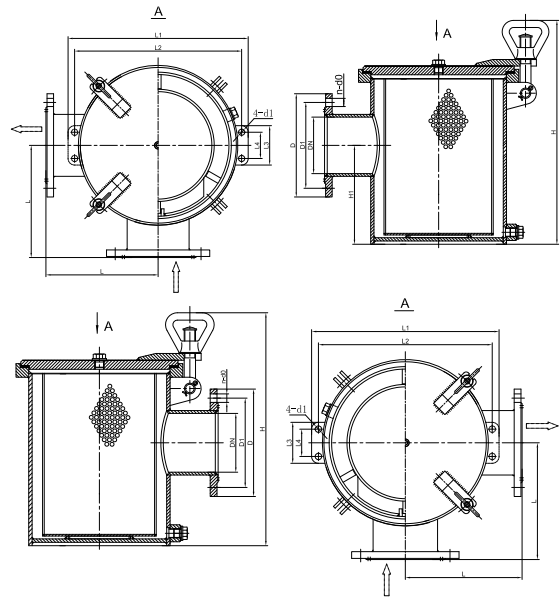
Design Standard	Manufacturer's standard
Flange Standard	EN 1092-1 (DIN 2501)
Flanges Drilled	PN10 (DN 40-DN500)

Features

- Welded structure

Options

- Other dimension and materials on request





Refer standards

Design Standard	Manufacturer's standard
Flange Standard	EN 1092-2 (DIN 2501)
Face to Face Standard	DIN 3202-F1

Features

- Straight type
- Filtration area ≥ 3

Options

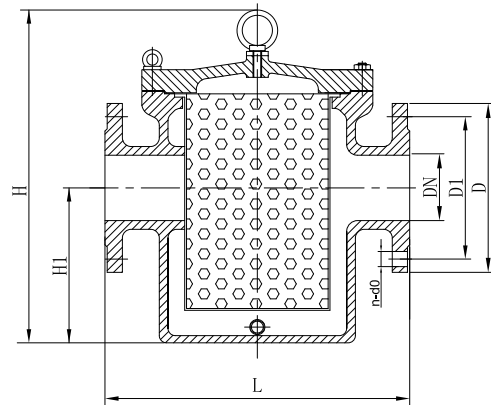
- Other dimension and materials on request

Pressure & Temperature Range

DN	Connection	Max.working pressure (bar)
DN40-DN700	PN10	-10°C to +120°C
		4

Materials

Component	Material	Code
Body	Cast iron	EN-GJL-250 (GG25)
bonnet	Cast iron	EN-GJL-250 (GG25)
Basket	Stainless steel	X5CrNiMo17-12-2(1.4401)



Dimensions

DN	L	D	D1	H	n	d0	Weight(Kg)
40	200	150	110	210	4	18	12
50	230	165	125	215	4	18	18
65	290	185	145	265	4	18	23
80	310	200	160	300	8	18	28
100	350	220	180	340	8	18	42
125	400	250	210	415	8	18	60
150	480	285	240	465	8	22	75
200	600	340	295	580	8	22	150
250	600	395	350	620	12	22	160
300	700	445	400	660	12	22	220
350	800	505	460	750	16	22	237
400	740	565	515	900	16	26	330
450	1000	615	565	1000	20	26	520
500	1100	670	620	1100	20	26	860
600	1100	780	725	1100	20	30	940
700	1250	895	840	1150	24	30	1000



Refer standards

Design Standard	Manufacturer's standard
Flange Standard	EN1092-3 (DIN2501)
Face to Face Standard	DIN 3202-F1
Flanges Drilled	PN10 (DN 40-DN700)

Features

- Straight type
- Filtration area ≥ 3

Options

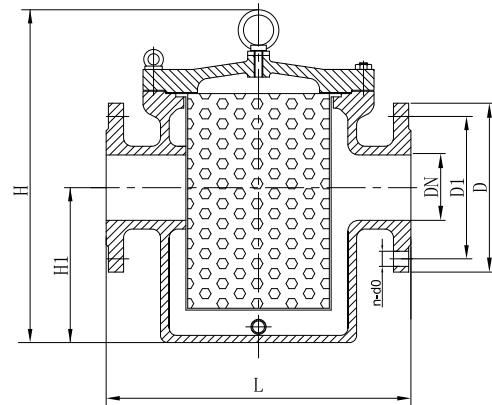
- Other dimension and materials on request

Pressure & Temperature Range

DN	Connection	Max.working pressure (bar)
		-10°C to +120°C
DN40-DN700	PN10	4

Materials

Component	Material	Code
Body	Bronze	CuSn5Zn5Pb5-C
bonnet	Bronze	CuSn5Zn5Pb5-C
Basket	Stainless steel	X5CrNiMo17-12-2(1.4401)



Dimensions

DN	L	D	D1	H	n	d0	Weight(Kg)
40	200	150	110	210	4	18	10.8
50	230	165	125	215	4	18	16.2
65	290	185	145	265	4	18	21
80	310	200	160	300	8	18	25
100	350	220	180	340	8	18	38
125	400	250	210	415	8	18	54
150	480	285	240	465	8	22	67.5
200	600	340	295	580	8	22	138
250	600	395	350	620	12	22	145
300	700	445	400	660	12	22	200
350	800	505	460	750	16	22	215
400	740	565	515	900	16	26	298
450	1000	615	565	1000	20	26	469
500	1100	670	620	1100	20	26	780
600	1100	780	725	1100	20	30	850
700	1250	895	840	1150	24	30	910



Refer standards

Design Standard	DIN 87151
Flange Standard	EN1092-2 (DIN2501)
Face to Face Standard	DIN 87151
Flanges Drilled	PN10 (DN 40-DN600)

Features

- Straight type
- Filtration area ≥ 3

Options

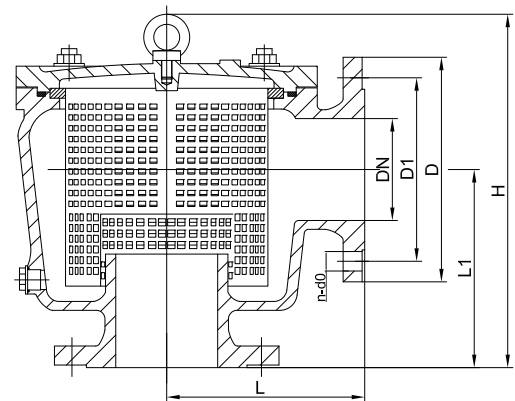
- Other dimension and materials on request

Pressure & Temperature Range

DN	Connection	Max.working pressure (bar)
DN40-DN450	PN10	4
DN500-DN600	PN10	2.5

Materials

Component	Material	Code
Body	Cast iron	EN-GJL-250 (GG25)
bonnet	Cast iron	EN-GJL-250 (GG25)
Basket	Stainless steel	X5CrNiMo17-12-2(1.4401)



Dimensions

DN	L	L1	D	D1	H	n	d0	Weight(Kg)
40	125	125	150	110	235	4	18	12
50	135	135	165	125	255	4	18	15
65	150	150	185	145	270	4	18	20
80	175	175	200	160	320	8	18	30
100	195	195	220	180	345	8	18	38
125	220	220	250	210	410	8	18	62
150	270	270	285	240	470	8	22	87
200	300	300	340	295	535	8	22	125
250	390	390	395	350	650	12	22	165
300	450	450	445	400	800	12	22	245
350	400	400	505	460	735	16	22	250
400	520	520	565	515	940	16	26	380
450	625	625	615	565	1050	20	26	530
500	675	675	670	620	1130	20	26	590
600	720	720	780	725	1225	20	30	850



Refer standards

Design Standard	DIN 87151
Flange Standard	EN1092-3 (DIN2501)
Face to Face Standard	DIN 87151
Flanges Drilled	PN10 (DN 40-DN600)

Features

- Straight type
- Filtration area ≥ 3

Options

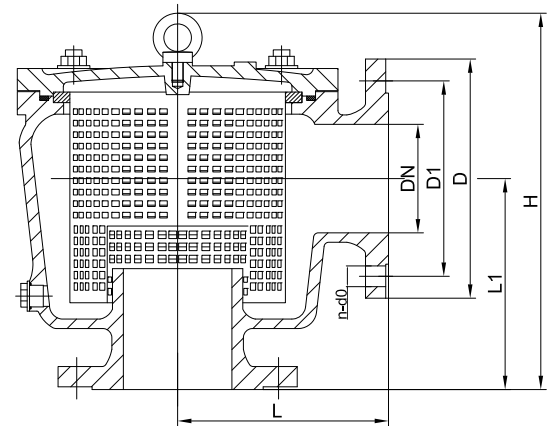
- Other dimension and materials on request

Pressure & Temperature Range

DN	Connection	Max.working pressure (bar)
		-10°C to +120°C
DN40-DN450	PN10	4
DN500-DN600	PN10	2.5

Materials

Component	Material	Code
Body	Bronze	CuSn5Zn5Pb5-C
bonnet	Bronze	CuSn5Zn5Pb5-C
Basket	Stainless steel	X5CrNiMo17-12-2(1.4401)



Dimensions

DN	L	L1	D	D1	H	n	d0	Weight(Kg)
40	125	125	150	110	235	4	18	14
50	135	135	165	125	255	4	18	18
65	150	150	185	145	270	4	18	22
80	175	175	200	160	320	8	18	30
100	195	195	220	180	345	8	18	42
125	220	220	250	210	410	8	18	70
150	270	270	285	240	470	8	22	94
200	300	300	340	295	535	8	22	145
250	390	390	395	350	650	12	22	170
300	450	450	445	400	800	12	22	260
350	400	400	505	460	735	16	22	270
400	520	520	565	515	940	16	26	390
450	625	625	615	565	1050	20	26	550
500	675	675	670	620	1130	20	26	630
600	720	720	780	725	1225	20	30	900



Refer standards

Design Standard	DIN 3472
Flange Standard	EN1092-2 (DIN2501)
Face to Face Standard	DIN 3202-F1

Features

- T or L type

Options

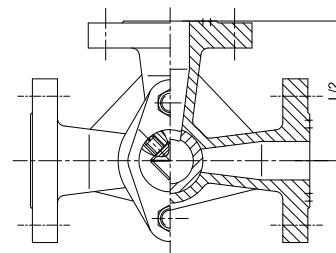
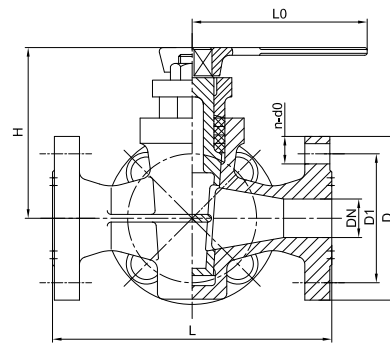
- Other dimension and materials on request

Pressure & Temperature Range

DN	Connection	Max.working pressure (bar)
DN15-DN80	PN6	-20°C to +200°C

Materials

Component	Material	Code
Body	Cast iron	EN-GJL-250 (GG25)
Plug	Bronze	CuSn5Zn5Pb5-C
Gland	Cast iron	EN-GJL-250 (GG25)
Packing	Graphite	-
Hex Nut	Steel	-



Dimensions

DN	L	D	D1	H	L0	n	d0	Weight (Kg)
15	130	95	65	90	125	4	14	5.0
20	150	105	75	102	125	4	14	5.0
25	160	115	85	117	140	4	14	5.8
32	180	140	100	141	160	4	18	9.1
40	200	150	110	148	180	4	18	12.5
50	230	165	125	176	230	4	18	18
65	290	185	145	215	250	4	18	28
80	310	200	160	250	320	8	18	36



Refer standards

Design Standard	DIN 3472
Flange Standard	EN1092-3 (DIN2501)
Face to Face Standard	DIN 3202-F1

Features

- T or L type

Options

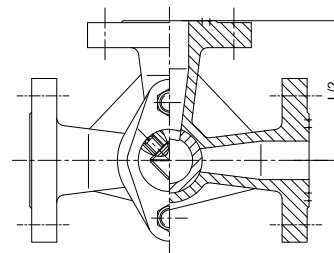
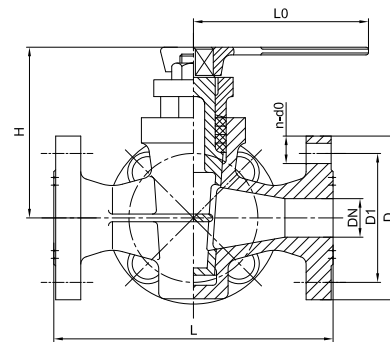
- Other dimension and materials on request

Pressure & Temperature Range

DN	Connection	Max.working pressure (bar)
DN15-DN80	PN6	-20°C to +200°C

Materials

Component	Material	Code
Body	Bronze	CuSn5Zn5Pb5-C
Plug	Bronze	CuSn5Zn5Pb5-C
Gland	Bronze	CuSn5Zn5Pb5-C
Packing	Graphite	-
Hex Nut	Steel	-



Dimensions

DN	L	D	D1	H	L0	n	d0	Weight (Kg)
15	130	95	65	90	125	4	14	5.0
20	150	105	75	102	125	4	14	5.0
25	160	115	85	117	140	4	14	5.8
32	180	140	100	141	160	4	18	9.1
40	200	150	110	148	180	4	18	12.5
50	230	165	125	176	230	4	18	18
65	290	185	145	215	250	4	18	28
80	310	200	160	250	320	8	18	36



Refer standards

Design Standard	DIN 86211
Flange Standard	EN1092-3 (DIN2501)
Thread Standard	ISO 228

Features

- Soft sealing/ Metal sealing

Options

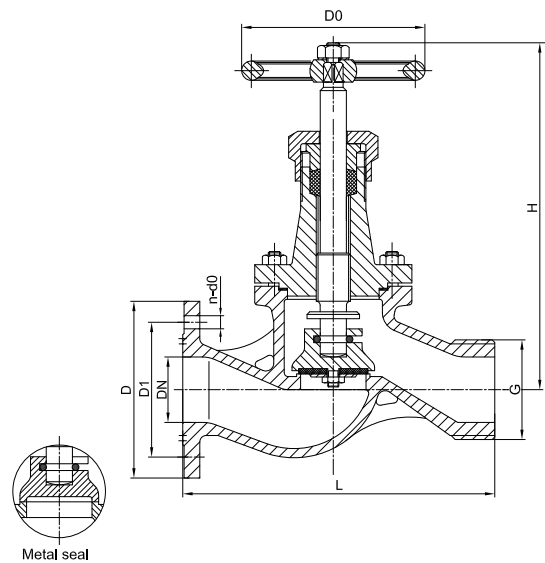
- Other dimension and materials on request

Pressure & Temperature Range

DN	Connection	Max.working pressure (bar)
DN40-DN65	PN16	-10°C to +100°C 16

Materials

Component	Material	Code
Body	Bronze	CuSn5Zn5Pb5-C
bonnet	Bronze	CuSn5Zn5Pb5-C
Disc	Bronze	CuSn5Zn5Pb5-C
Stem	Brass	CuZn35Ni
Packing	PTFE	-
Handwheel	Cast iron	-
Bolt/Nut	Stainless Steel	X5CrNi18-10 (1.4301)



Dimensions

DN	L	G	H	D	D1	D0	n	d0	Weight(Kg)
40	165	G1 1/2"	167	150	110	140	4	18	6.0
50	167	G2"	170	165	125	140	4	18	7.5
65	200	G2 1/2"	200	185	145	140	4	18	10.9



Refer standards

Design Standard	DIN 86211
Flange Standard	EN1092-3 (DIN2501)
Thread Standard	ISO 228

Features

- Soft sealing/ Metal sealing

Options

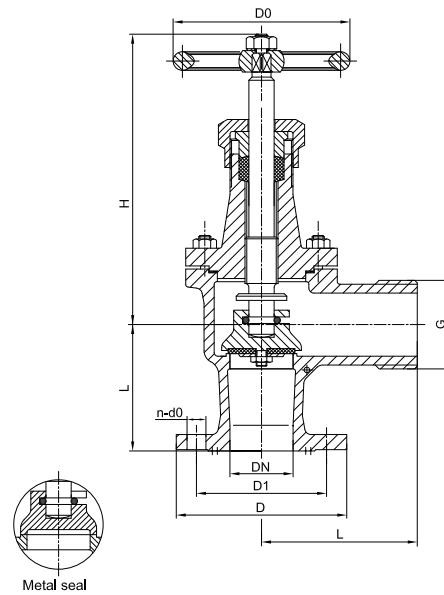
- Other dimension and materials on request

Pressure & Temperature Range

DN	Connection	Max.working pressure (bar)
DN40-DN65	PN16	-10°C to +100°C

Materials

Component	Material	Code
Body	Bronze	CuSn5Zn5Pb5-C
bonnet	Bronze	CuSn5Zn5Pb5-C
Disc	Bronze	CuSn5Zn5Pb5-C
Stem	Brass	CuZn35Ni
Packing	PTFE	-
HandWheel	Cast iron	-
Bolt/Nut	Stainless Steel	X5CrNi18-10 (1.4301)



Dimensions

DN	L	G	H	D	D1	D0	n	d0	Weight(Kg)
40	75	G1 1/2"	140	150	110	140	4	18	5.3
50	75	G2"	140	165	125	140	4	18	5.9
65	95	G2 1/2"	170	185	145	140	4	18	10.2

Pressure Gauge Valve

Straight type , Threaded ends, Brass

Product Number: S814-01



Refer standards

Design Standard Manufacturer's standard

Thread Standard ISO 228

Features

- Threaded connection

Options

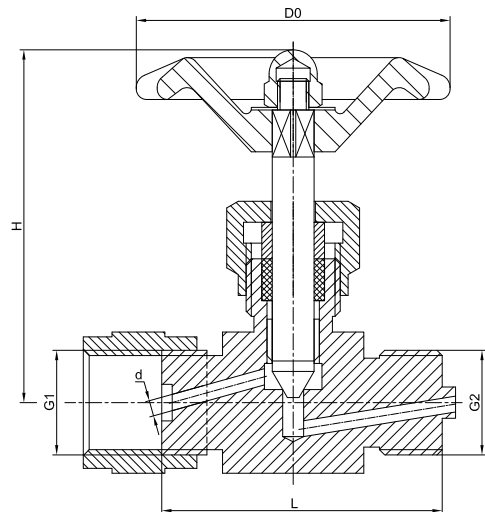
- Other dimension and materials on request

Pressure & Temperature Range

DN	Max.working pressure (bar)
DN8-DN15	up to 185°C 100

Materials

Component	Material	Code
Body	Brass	CW614N
Stem	Brass	CW614N
packing	Graphite	



Dimensions

DN	L	G1(BSP)	G2(BSP)	d	H	D0	Weight(Kg)
8	50	G1/4"	G1/4"	3.5	95	65	0.3
10	54	G3/8"	G3/8"	3.5	95	65	0.3
15	64	G1/2"	G1/2"	3.5	95	65	0.4

Pressure Gauge Valve

Straight type , Threaded ends, Brass

Product Number: S814-02



Refer standards

Design Standard	Manufacturer's standard
Thread Standard	ISO 228

Features

- Threaded connection

Options

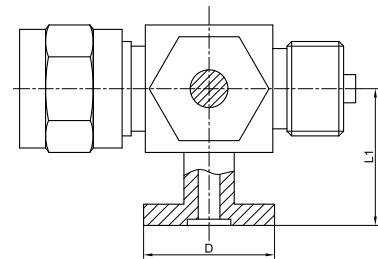
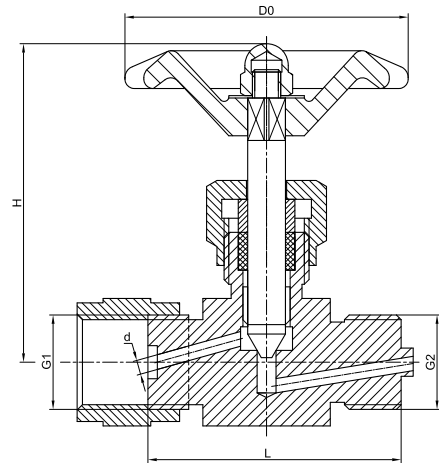
- Other dimension and materials on request

Pressure & Temperature Range

DN	Max.working pressure (bar)
DN8-DN15	up to 185°C 100

Materials

Component	Material	Code
Body	Brass	CW614N
Stem	Brass	CW614N
packing	Graphite	-



Dimensions

DN	L	G1(BSP)	G2(BSP)	D	d	L1	H	D0	Weight(Kg)
8	50	G1/4"	G1/4"	40	3.5	31	95	65	0.4
10	54	G3/8"	G3/8"	40	3.5	31	95	65	0.4
15	64	G1/2"	G1/2"	40	3.5	34	95	65	0.5



Refer standards

Design Standard	Manufacturer's standard
Flange Standard	EN1092-1 (DIN2501)
Face to Face Standard	DIN 3202-F1

Features

Parcel Material: Glass, PC Board

Options

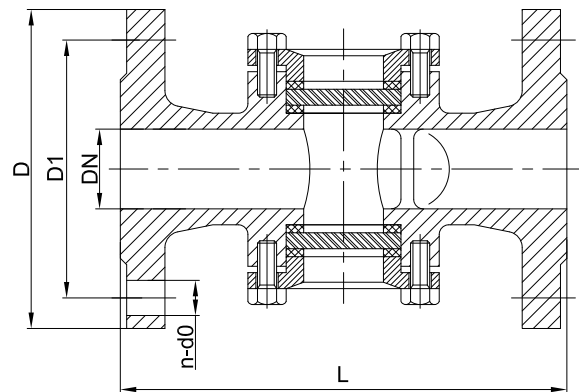
- Other dimension and materials on request

Pressure & Temperature Range

DN	Connection	Max.working pressure (bar)
DN 15-DN200	PN16	-20°C to +150°C 16

Materials

Component	Material	Code
Body	Cast Steel	GP240GH (1.0619)
bonnet	Cast Steel	GP240GH (1.0619)
Gasket	PTFE	-
Glass Parcel	Glass	-



Dimensions

DN	L	D	D1	n	d0	Weight(Kg)
15	130	95	65	4	14	3.1
20	150	105	75	4	14	3.7
25	160	115	85	4	14	4.0
32	180	140	100	4	18	6.6
40	200	150	110	4	18	7.7
50	230	165	125	4	18	9.0
65	290	185	145	4	18	14.2
80	310	200	160	8	18	17.1
100	350	220	180	8	18	23.1
125	400	250	210	8	18	32.0
150	480	285	240	8	22	47.4
200	600	340	295	8	22	63.0



Refer standards

Design Standard	Manufacturer's standard
Flange Standard	EN1092-1 (DIN2501)
Face to Face Standard	DIN 3202-F1

Features

Parcel Material: Glass, PC Board

Options

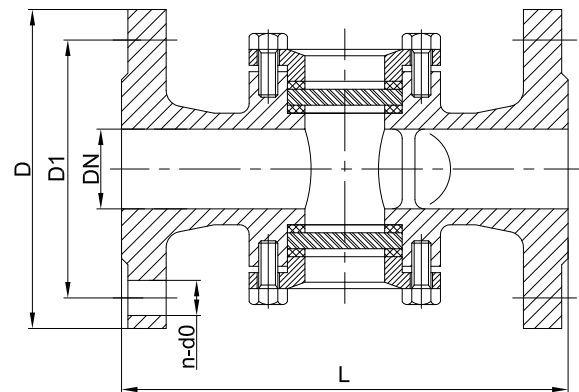
- Other dimension and materials on request

Pressure & Temperature Range

DN	Connection	Max.working pressure (bar)
DN 15-DN200	PN16	-20°C to +150°C 16

Materials

Component	Material	Code
Body	Stainless Steel	GX5CrNiMo19-11-2 (1.4408)
bonnet	Stainless Steel	GX5CrNiMo19-11-2 (1.4408)
Gasket	PTFE	-
Glass Parcel	Glass	-



Dimensions

DN	L	D	D1	n	d0	Weight(Kg)
15	130	95	65	4	14	3.1
20	150	105	75	4	14	3.7
25	160	115	85	4	14	4.0
32	180	140	100	4	18	6.6
40	200	150	110	4	18	7.7
50	230	165	125	4	18	9.0
65	290	185	145	4	18	14.2
80	310	200	160	8	18	17.1
100	350	220	180	8	18	23.1
125	400	250	210	8	18	32.0
150	480	285	240	8	22	47.4
200	600	340	295	8	22	63.0



Refer standards

Design Standard	Manufacturer's standard
Flange Standard	EN1092-1 (DIN2501)

Features

Isolating different tanks, especially when oil ,water and cement etc. may be handled in the seam system.

Options

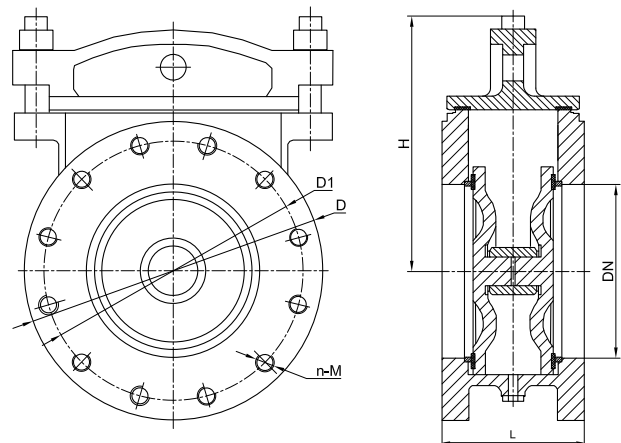
- Other dimension and materials on request

Pressure & Temperature Range

DN	Connection	Max.working pressure (bar)
DN40-DN300	PN16	-50°C to +200°C 16

Materials

Component	Material	Code
Body	Cast steel	GP240GH (1.0619)
Disc	Stainless Steel	GX5CrNiMo19-11-2 (1.4408)
Top cover	Cast steel	GP240GH (1.0619)
Disc Seal	PTFE	-
Top Seal	PTFE	-
Metal Ring	Stainless Steel	GX5CrNiMo19-11-2 (1.4408)



Dimensions

DN	L	D	D1	H	n	M	Weight(Kg)
40	154	150	110	180.5	4	M16	16
50	154	165	125	180.5	4	M16	20
65	154	185	145	185	4	M16	22
80	154	200	160	294	8	M16	29
100	162	220	180	235	8	M16	33
125	162	250	210	245	8	M16	42
150	162	285	240	265	8	M20	49
200	162	340	295	300	12	M20	67
250	200	405	355	330	12	M24	104
300	200	460	410	360	12	M24	112



Refer standards

Design Standard	Manufacturer's standard
Flange Standard	EN1092-1 (DIN2501)
Flanges Drilled	PN16(DN40-DN300)

Features

Isolating different tanks, especially when oil ,water and cement etc. may be handled in the seam system.

Options

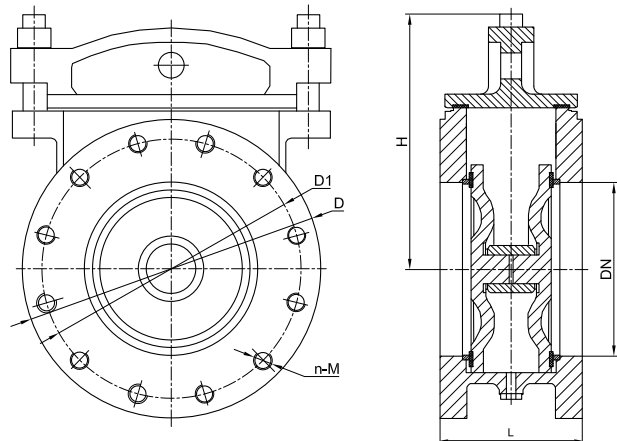
- Other dimension and materials on request

Pressure & Temperature Range

DN	Connection	Max.working pressure (bar)
DN40-DN300	PN16	-50°C to +200°C 16

Materials

Component	Material	Code
Body	Stainless steel	GX5CrNiMo19-11-2 (1.4408)
Disc	Stainless Steel	GX5CrNiMo19-11-2 (1.4408)
Top cover	Stainless Steel	GX5CrNiMo19-11-2 (1.4408)
Disc Seal	PTFE	-
Top Seal	PTFE	-
Metal Ring	Stainless Steel	GX5CrNiMo19-11-2 (1.4408)



Dimensions

DN	L	D	D1	H	n	M	Weight(Kg)
40	154	150	110	180.5	4	M16	16
50	154	165	125	180.5	4	M16	20
65	154	185	145	185	4	M16	22
80	154	200	160	294	8	M16	29
100	162	220	180	235	8	M16	33
125	162	250	210	245	8	M16	42
150	162	285	240	265	8	M20	49
200	162	340	295	300	12	M20	67
250	200	405	355	330	12	M24	104
300	200	460	410	360	12	M24	112



Refer standards

Design Standard Manufacturer's standard

End Standard ISO 228-1: 2003

Features

- Taper sealing
- Threaded connection

Options

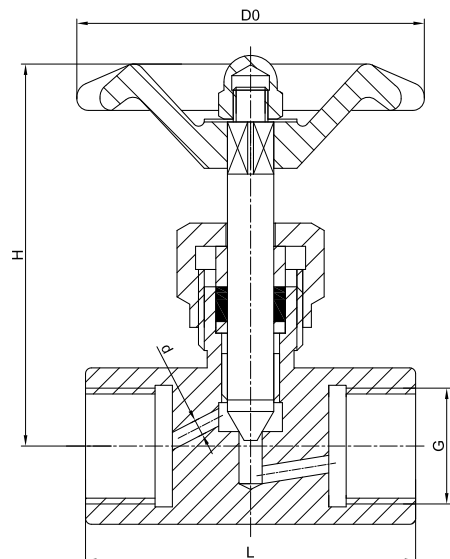
- Other dimension and materials on request

Pressure & Temperature Range

DN	Max.working pressure(bar)			
	20°C	125°C	200°C	300°C
6-25	400	160	125	20

Materials

Component	Material	Code
Body	Stainless steel	X2CrNiMo17-12-2(1.4404)
Stem	Stainless Steel	X3CrNiMoN27-5-2(1.4460)
packing	Graphite	-



Dimensions

DN	L	G(BSP)	d	H	D0	Weight(Kg)
6	60	G1/8"	4	85	65	0.4
8	60	G1/4"	5	85	65	0.4
10	60	G3/8"	5	85	65	0.4
15	60	G1/2"	5	85	65	0.4
20	70	G3/4"	8	100	85	0.9
25	80	G1"	10	110	100	1.1



Refer standards

Design Standard	DIN 86251
Face to face	DIN 3202-F1/EN 558 Series 1
Flange connection	EN 1092-2 (DIN2501)

Features

- Rotary or pedal type

Options

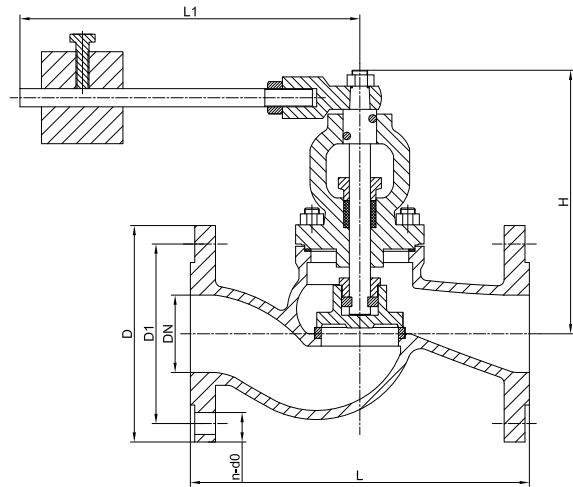
- Other dimension and materials on request

Pressure & Temperature Range

DN	Connection	Max.working pressure (bar)
DN15-DN100	PN16	-10°C to +120°C 16

Materials

Component	Material	Code
Body	Cast iron	EN-GJL-250 (GG25)
bonnet	Cast iron	EN-GJL-250 (GG25)
Seat	Stainless Steel	X5CrNi18-10 (1.4301)
Disc	Stainless Steel	X5CrNi18-10 (1.4301)
Stem	Stainless Steel	X20Cr13(1.4021)
Bonnet gasket	Graphite	
Gland packing	Graphite	
Lever and counter weight	Steel	St37



Dimensions

DN	L	D	D1	H	L1	n	d0	Weight(Kg)
15	130	95	65	160	245	4	14	5.0
20	150	105	75	160	245	4	14	6.0
25	160	115	85	166	245	4	14	7.0
32	180	140	100	167	245	4	18	8.0
40	200	150	110	207	295	4	18	13
50	230	165	125	220	295	4	18	15
65	290	185	145	225	295	4	18	23
80	310	200	160	270	295	8	18	30
100	350	220	180	280	295	8	18	40

Self Closing Valve

Angle type, DIN flange, Cast iron

Product Number: S285



Refer standards

Design Standard	DIN 86251
Face to face	EN 558 Series 8
Flange connection	EN 1092-2 (DIN2501)

Features

- Rotary or pedal type

Options

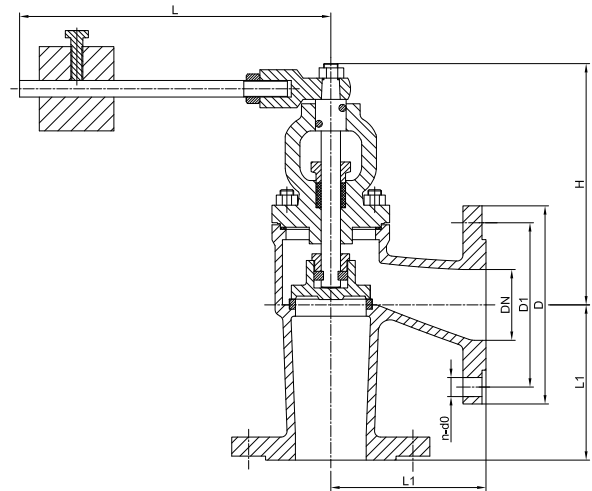
- Other dimension and materials on request

Pressure & Temperature Range

DN	Connection	Max.working pressure (bar)
DN15-DN100	PN16	-10°C to +120°C

Materials

Component	Material	Code
Body	Cast iron	EN-GJL-250 (GG25)
bonnet	Cast iron	EN-GJL-250 (GG25)
Seat	Stainless Steel	X8CrNiS18-9 (1.4305)
Disc	Stainless Steel	X8CrNiS18-9 (1.4305)
Stem	Stainless Steel	X8CrNiS18-9 (1.4305)
Bonnet gasket	Graphite	
Gland packing	Graphite	
Lever and counter weight	Steel	St37



Dimensions

DN	L1	D	D1	H	L	n	d0	Weight(Kg)
15	90	95	65	153	245	4	14	5.0
20	95	105	75	153	245	4	14	5.5
25	100	115	85	153	245	4	14	7.0
32	105	140	100	158	245	4	18	8.0
40	115	150	110	203	295	4	18	13
50	125	165	125	208	295	4	18	15
65	145	185	145	208	295	4	18	23
80	155	200	160	240	295	8	18	30
100	175	220	180	260	295	8	18	40

Self Closing Valve

Threaded ends, Bronze

Product Number: S285



Refer standards

Design Standard Manufacturer's standard

End connection ISO228-1:2003

Features

- Pedal type

Options

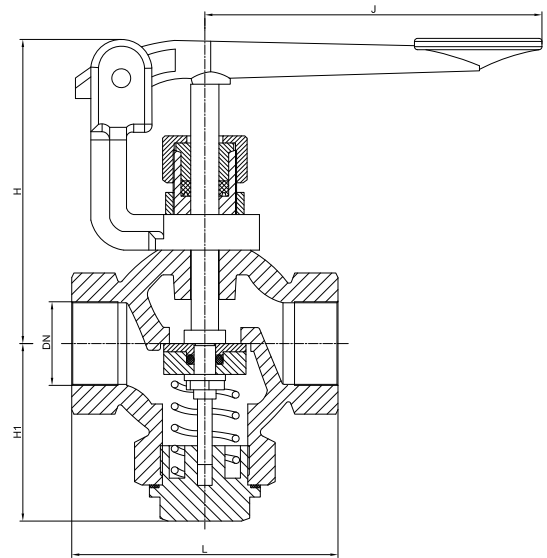
- Other dimension and materials on request

Pressure & Temperature Range

DN	Connection	Max.working pressure (bar)
DN15-DN100	PN16	-10°C to +180°C 16

Materials

Component	Material	Code
Body	Bronze	CuSn5Zn5Pb5-C
bonnet	Bronze	CuSn5Zn5Pb5-C
Disc	Brass	-
Stem	Brass	-
Spring	Stainless Steel	-
Lever	Bronze	CuSn5Zn5Pb5-C
Gasket	PTFE	-
Disc Ring	PTFE	-



Dimensions

DN	Connection(BSP)	L	H1	H	J	Weight(Kg)
15	G1/2"	65	44	84	83	0.8
20	G3/4"	76	51	87	83	1
25	G1"	80	53	89	83	1.2
32	G1 1/4"	90	60	107	155	2.2
40	G2 1/2"	102	69	119	155	2.8
50	G2"	136	85	135	155	4.5

Self Closing Valve

DIN flange, Bronze

Product Number: S285



Refer standards

Design Standard	Manufacturer's standard
End connection	ISO228-1:2003

Features

- Pedal type

Options

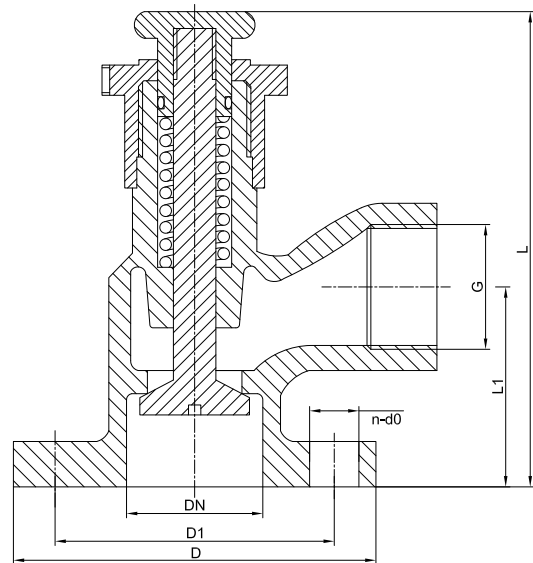
- Other dimension and materials on request

Pressure & Temperature Range

DN	Connection	Max.working pressure (bar)
		-10°C to +80°C
DN20-DN25	PN16	16

Materials

Component	Material	Code
Body	Bronze	CuSn5Zn5Pb5-C
Stem	Special brass	SoMs59
Spring	Stainless Steel	X5CrNiMo17-12-2(1.4401)
Locking Nut	Bronze	CuSn5Zn5Pb5-C
Push Button	Bronze	CuSn5Zn5Pb5-C
O-Ring	NBR	



Dimensions

DN	G	L1	L	D	D1	n	d0	Weight(Kg)
20	1"	60	145	105	75	4	14	2.3
25	1"	60	145	115	85	4	14	2.7

ACTUATION-GENERAL OVERVIEW

HYDRAULIC / ELECTRIC / PNEUMATIC AFFCO--THE ACTUATION SPECIALIST

Application

Affco offer a comprehensive, market leading valve and actuation solution for all your applications. We have the expertise to size valves and actuators for our clients specific requirements, offering a value engineered solution with lower whole life running costs. Our team of technical engineers can offer the reassurance of an engineered resolution to your flow control, isolation and slam shut applications.



Features

Whether you require Pneumatic, Hydraulic or Electrically operated valves we can specify, assemble, commission and test custom built packages to your needs. All based and certified from our valve and actuator center.

In house hydrostatic test facilities to EN: 12266-1, enabling the commissioning of pneumatic, electric and hydraulic valves.

After sale services, In house and on site training, site services and actuator retro fitting and commissioning by one of our qualified service engineers.



Our engineers all carry upto date CSCS, hygiene and confined space training cards.

Global manufacturing partners including Rotork, Auma and Bernard. Plus many others.

Options

- On site build and test solutions
- Off site commissioning and site services
- Free issue build and test services
- Retrofit of actuators and controls
- Bespoke actuator packages
- Refurbishment and service agreements



Accessories

In house fabricated Mounting Kits, extension spindles and floor pillars.
Switch boxes, limit switches, Profibus and network enabled controls, positioners, proximity switches, ATEX certification





WHERE SOLIDARITY AND COOPERATION COME TOGETHER.



Website

www.affco-flowcontrol.com

AFFCO Flow Control (Shanghai) Co., Ltd

No. 99 Desheng Road,
Economic and Technological Development
Area, Feng Xian, Shanghai 201411

Tel: +86 (21) 5814 7017

Fax: +86 (21) 5814 7885

Web: www.affco-flowcontrol.com

Email: sales@alfacasting.com

AFFCO Flow Control Europe B.V.

Opweg 90a, 2871 NG, Schoonhoven,
The Netherlands

Tel: +31 (0)85 877 27 56

Fax: +31 (0)85 782 51 01

Web: www.affco-flowcontrol.com

Email: sales.info@affco-flowcontrol.com

AFFCO Flow Control Pte Ltd

237, Pandan Loop, #05-04, Westech
Building

Singapore 128424

Tel : +65 65709920

Fax : +65 65709923

Email: info@affco.com.sg

AFFCO Flow Control Mideast FZE

SAIF Suite Y-16

P.O. BOX 123612

Sharjah - U.A.E.

Tel: +971 6 5220879

Email: info@affcomideast.ae

AFFCO Flow Control UK Ltd.

Unit 7, Stafford Park 12, Telford,
Shropshire, TF3 3BJ, England

Tel: +44 (0)1952 459 338

Email: sales@affco-flowcontrol.co.uk